



Ridea
heating design

NEWS 2014

INDICE / INDEX

NEWS 2014

PIANO PLAIN	04
PIANO MOVE	08
PIANO SHIFT	12
SCHEMA BIRD	16
SCHEMA CAT	16
SCHEMA WOLLY	16
EXTRÓ DECÓ	20
BLOK LIGHT	24

PRODUCT OVERVIEW

SCHEMA COLLECTION	28
EXTRÓ COLLECTION	29
OTHELLO COLLECTION	30
BLOK COLLECTION	32
CLASSIC COLLECTION	34

CULTURA SOSTENIBILE / SUSTAINABLE CULTURE

200 X



=



ALLUMINIO RICICLATO
ALUMINIUM CANS

RADIATORE RIDEA
RIDEA RADIATOR

LA TOTALITÀ DEI RADIATORI CHE PRODUCIAMO È REALIZZATA IN ALLUMINIO RICICLATO. L'ALLUMINIO È IL TERZO ELEMENTO PRESENTE SULLA TERRA IN UNA QUOTA PARI ALL' 8% ED È RICICLABILE ALL'INFINITO. L'ITALIA È IL TERZO PRODUTTORE AL MONDO DI ALLUMINIO RICICLATO.

200 LATTINE RICICLATE POSSONO DAR VITA A UN RADIATORE DI DESIGN.

THE ENTIRETY OF OUR RADIATORS PRODUCED IS REALIZED WITH RECYCLED ALUMINIUM. ALUMINIUM IS THE THIRD ELEMENT ON THE EARTH WITH A PERCENTAGE OF ABOUT 8% AND IT'S INFINITELY RECYCLABLE. ITALY IS THE THIRD LARGEST PRODUCER OF IT.

200 RECYCLED ALUMINIUM CANS CAN GIVE LIFE TO A DESIGN RADIATOR.

RIDUZIONE DEL PESO / WEIGHT REDUCTION

RADIATORI ALLUMINIO RIDEA
RIDEA ALUMINIUM RADIATORS



ALLUMINIO PRESSOFUSO
DIE-CAST ALUMINIUM



FERRO
IRON



GHISA
CAST IRON



Peso (a parità di resa termica) | Weight (at equal thermal efficiency)

MINORE QUANTITÀ DI ACQUA / LOWER QUANTITY OF WATER

36% RADIATORI ALLUMINIO RIDEA | RIDEA ALUMINIUM RADIATORS

100% RADIATORI ALLUMINIO PRESSOFUSI | DIE-CAST ALUMINIUM RADIATORS

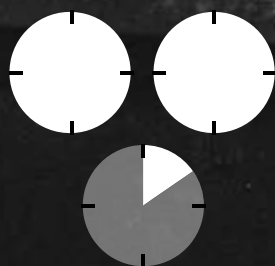
219% GHISA | CAST IRON

343% TUBOLARI FERRO | IRON PIPES

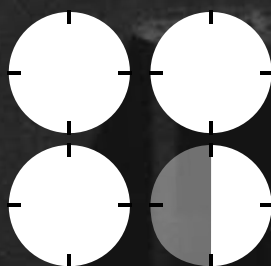
Quantità di acqua utilizzata | Quantity of water used

TEMPI DI RISCALDAMENTO RIDOTTI / SAVING HEATING TIME

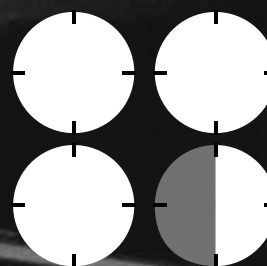
130 MIN



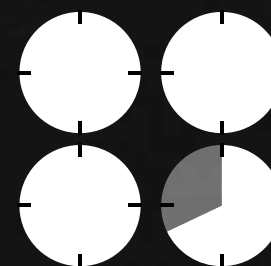
211 MIN



211 MIN



218 MIN



Messa a regime dei locali (da 5°C a 21°C; $\Delta t = 30^\circ\text{C}$) | Room heating capacity (da 5°C a 21°C; $\Delta t = 30^\circ\text{C}$)





PIANO PLAIN

design meneghello paoelli
associati

~~~~~

Semplicità, linearità e raffinatezza: queste le parole chiave che meglio rappresentano Piano Plain. Un radiatore capace di soddisfare i gusti estetici di molti e che ben si adatta ad ogni stile abitativo, dal classico al moderno.

~~~~~






Simplicity, linearity and refinement: these are the keywords that best describe Piano Plain: a radiator that is able to satisfy the aesthetic preferences of many and goes well with all types of home decor style, from classical to contemporary.



*Finitura fotografata in queste pagine:
Noir 163 chinè.*

*Finish photographed on these pages:
Noir 163 chinè.*

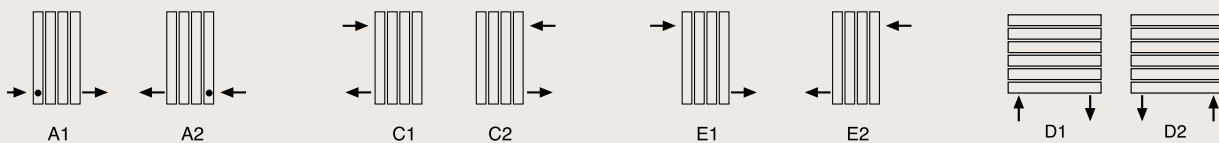
PIANO PLAIN

hxb (cm)	n numero elementi/ elements number	peso a vuoto/ weight empty (kg)	volume d'acqua/ water volume (dm ³)	a (cm)	c (cm)	d* (cm)	e* (cm)	f** (cm)	Qs resa termica/ thermal yield Δt 50°C (watt)	Q potenza elettrica/ electrical power (watt)	versione mista*/ combined version*	fissa/ not opening	fissa**/ not opening**
													
VERTICALE													
60x36,6	3	5,8	0,47	50	5	6,4	4,5	3,8	523	-	-	●	-
60x48,7	4	7,7	0,63	50	5	6,4	4,5	3,8	697	-	-	●	-
60x60,8	5	9,6	0,79	50	5	6,4	4,5	3,8	871	-	-	●	-
60x72,9	6	11,6	0,94	50	5	6,4	4,5	3,8	1045	-	-	●	-
60x85	7	13,5	1,10	50	5	6,4	4,5	3,8	1219	-	-	●	-
60x97,1	8	15,4	1,26	50	5	6,4	4,5	3,8	1394	-	-	●	-
60x109,2	9	17,4	1,41	50	5	6,4	4,5	3,8	1568	-	-	●	-
70x36,6	3	6,8	0,53	60	5	6,4	4,5	3,8	602	-	-	●	-
70x48,7	4	9,1	0,70	60	5	6,4	4,5	3,8	803	-	-	●	-
70x60,8	5	11,4	0,87	60	5	6,4	4,5	3,8	1004	-	-	●	-
70x72,9	6	13,6	1,05	60	5	6,4	4,5	3,8	1204	-	-	●	-
70x85	7	15,9	1,22	60	5	6,4	4,5	3,8	1405	-	-	●	-
70x97,1	8	18,2	1,40	60	5	6,4	4,5	3,8	1606	-	-	●	-
70x109,2	9	20,4	1,57	60	5	6,4	4,5	3,8	1807	-	-	●	-
90x36,6	3	8,9	0,63	80	5	6,4	4,5	3,8	754	-	-	●	-
90x48,7	4	11,8	0,84	80	5	6,4	4,5	3,8	1006	-	-	●	-
90x60,8	5	14,8	1,05	80	5	6,4	4,5	3,8	1257	-	-	●	-
90x72,9	6	17,7	1,26	80	5	6,4	4,5	3,8	1509	-	-	●	-
90x85	7	20,7	1,47	80	5	6,4	4,5	3,8	1760	-	-	●	-
90x97,1	8	23,6	1,68	80	5	6,4	4,5	3,8	2012	-	-	●	-
90x109,2	9	26,6	1,89	80	5	6,4	4,5	3,8	2263	-	-	●	-
130x36,6	3	13,0	0,84	120	5	6,4	4,5	3,8	1035	-	-	●	-
160x36,6	3	16,0	1,00	150	5	6,4	4,5	3,8	1035	-	-	●	-
190x36,6	3	19,1	1,16	180	5	6,4	4,5	3,8	1035	-	-	●	-
190x48,7	4	25,5	1,55	180	5	6,4	4,5	3,8	1380	-	-	●	-
190x60,8	5	31,9	1,93	180	5	6,4	4,5	3,8	1725	-	-	●	-
190x72,9	6	38,3	2,32	180	5	6,4	4,5	3,8	2070	-	-	●	-
ORIZZONTALE													
48,7x70	4	9,1	0,70	60	5	6,4	4,5	3,8	344	-	-	-	●
60,8x70	5	11,4	0,87	60	5	6,4	4,5	3,8	430	-	-	-	●
72,9x70	6	13,6	1,05	60	5	6,4	4,5	3,8	516	-	-	-	●
48,7x90	4	11,8	0,84	80	5	6,4	4,5	3,8	431	-	-	-	●
60,8x90	5	14,8	1,05	80	5	6,4	4,5	3,8	539	-	-	-	●
72,9x90	6	17,7	1,26	80	5	6,4	4,5	3,8	647	-	-	-	●
48,7x190	4	25,5	1,55	180	5	6,4	4,5	3,8	591	-	-	-	●
60,8x190	5	31,9	1,93	180	5	6,4	4,5	3,8	739	-	-	-	●
72,9x90	6	38,3	2,32	180	5	6,4	4,5	3,8	887	-	-	-	●

* utilizzando valvole Ridea / using Ridea valves

** interasse per impianto monotubo utilizzando valvole Ridea / centre to centre distance for single pipe water systems using Ridea valves.

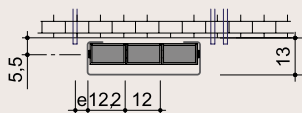
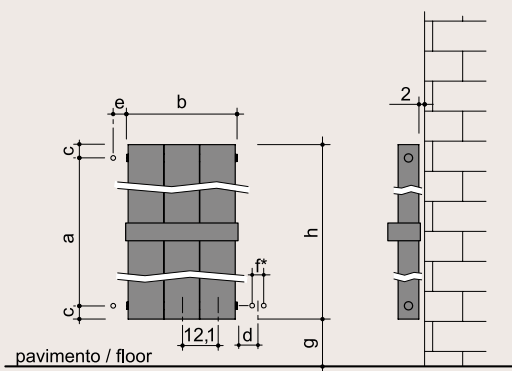
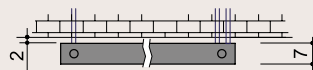
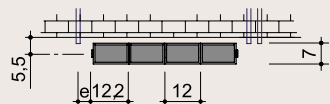
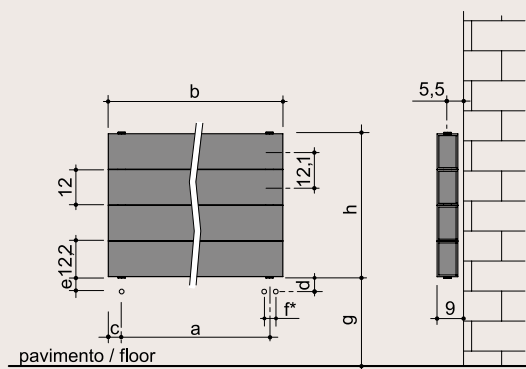
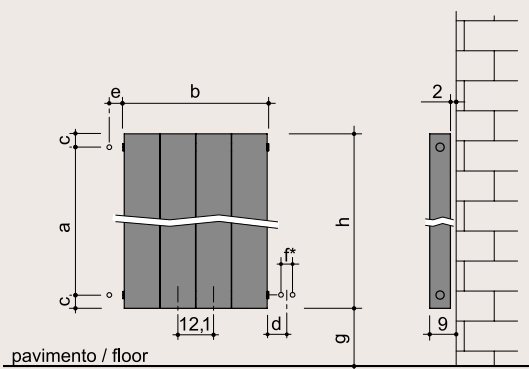
Per connessioni di tipo:
For connections type:



• = posizione diaframma
position of the diverter

g.
Altezza da terra facoltativa
(minimo 10 cm)

g.
Optional height from the floor
(min. 10 Cm)





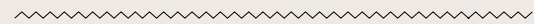


PIANO MOVE

design meneghello paoelli
associati



Un incontro perfetto tra caos e ordine: laddove tutto nasce. Un concetto atavico strutturato in un radiatore dal design moderno e accattivante.








The perfect encounter between chaos and order: where everything comes to life. A concept from our ancestral past has taken the form of a radiator featuring a modern, captivating appearance.



*Finitura fotografata in queste pagine:
Bianco puro sablè RAL 9010.*

*Finish photographed on these pages:
Bianco puro sablè RAL 9010.*

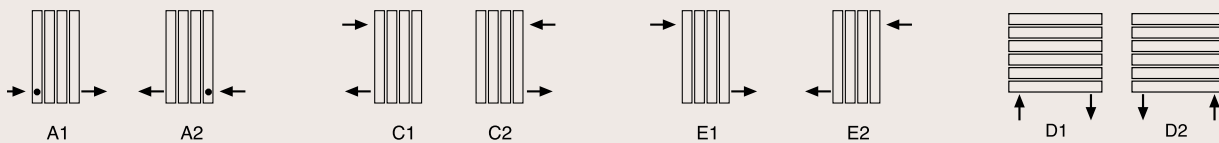
PIANO MOVE

hxb (cm)	n numero elementi/ elements number	peso a vuoto/ weight empty (kg)	volume d'acqua/ water volume (dm ³)	a (cm)	c (cm)	d* (cm)	e* (cm)	f** (cm)	Qs resa termica/ thermal yield Δt 50°C (watt)	Q potenza elettrica/ electrical power (watt)	versione mista* / combined version*	fissa / not opening	fissa** / not opening**
													
VERTICALE													
60x36,6	3	5,8	0,47	50	5	6,4	4,5	3,8	523	-	-	●	-
60x48,7	4	7,7	0,63	50	5	6,4	4,5	3,8	697	-	-	●	-
60x60,8	5	9,6	0,79	50	5	6,4	4,5	3,8	871	-	-	●	-
60x72,9	6	11,6	0,94	50	5	6,4	4,5	3,8	1045	-	-	●	-
60x85	7	13,5	1,10	50	5	6,4	4,5	3,8	1219	-	-	●	-
60x97,1	8	15,4	1,26	50	5	6,4	4,5	3,8	1394	-	-	●	-
60x109,2	9	17,4	1,41	50	5	6,4	4,5	3,8	1568	-	-	●	-
70x36,6	3	6,8	0,53	60	5	6,4	4,5	3,8	602	-	-	●	-
70x48,7	4	9,1	0,70	60	5	6,4	4,5	3,8	803	-	-	●	-
70x60,8	5	11,4	0,87	60	5	6,4	4,5	3,8	1004	-	-	●	-
70x72,9	6	13,6	1,05	60	5	6,4	4,5	3,8	1204	-	-	●	-
70x85	7	15,9	1,22	60	5	6,4	4,5	3,8	1405	-	-	●	-
70x97,1	8	18,2	1,40	60	5	6,4	4,5	3,8	1606	-	-	●	-
70x109,2	9	20,4	1,57	60	5	6,4	4,5	3,8	1807	-	-	●	-
90x36,6	3	8,9	0,63	80	5	6,4	4,5	3,8	754	-	-	●	-
90x48,7	4	11,8	0,84	80	5	6,4	4,5	3,8	1006	-	-	●	-
90x60,8	5	14,8	1,05	80	5	6,4	4,5	3,8	1257	-	-	●	-
90x72,9	6	17,7	1,26	80	5	6,4	4,5	3,8	1509	-	-	●	-
90x85	7	20,7	1,47	80	5	6,4	4,5	3,8	1760	-	-	●	-
90x97,1	8	23,6	1,68	80	5	6,4	4,5	3,8	2012	-	-	●	-
90x109,2	9	26,6	1,89	80	5	6,4	4,5	3,8	2263	-	-	●	-
130x36,6	3	13,0	0,84	120	5	6,4	4,5	3,8	1035	-	-	●	-
160x36,6	3	16,0	1,00	150	5	6,4	4,5	3,8	1035	-	-	●	-
190x36,6	3	19,1	1,16	180	5	6,4	4,5	3,8	1035	-	-	●	-
190x48,7	4	25,5	1,55	180	5	6,4	4,5	3,8	1380	-	-	●	-
190x60,8	5	31,9	1,93	180	5	6,4	4,5	3,8	1725	-	-	●	-
190x72,9	6	38,3	2,32	180	5	6,4	4,5	3,8	2070	-	-	●	-
ORIZZONTALE													
48,7x70	4	9,1	0,70	60	5	6,4	4,5	3,8	344	-	-	-	●
60,8x70	5	11,4	0,87	60	5	6,4	4,5	3,8	430	-	-	-	●
72,9x70	6	13,6	1,05	60	5	6,4	4,5	3,8	516	-	-	-	●
48,7x90	4	11,8	0,84	80	5	6,4	4,5	3,8	431	-	-	-	●
60,8x90	5	14,8	1,05	80	5	6,4	4,5	3,8	539	-	-	-	●
72,9x90	6	17,7	1,26	80	5	6,4	4,5	3,8	647	-	-	-	●
48,7x190	4	25,5	1,55	180	5	6,4	4,5	3,8	591	-	-	-	●
60,8x190	5	31,9	1,93	180	5	6,4	4,5	3,8	739	-	-	-	●
72,9x90	6	38,3	2,32	180	5	6,4	4,5	3,8	887	-	-	-	●

* utilizzando valvole Ridea / using Ridea valves

** interasse per impianto monotubo utilizzando valvole Ridea / centre to centre distance for single pipe water systems using Ridea valves.

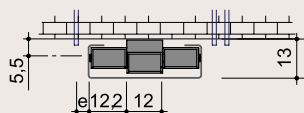
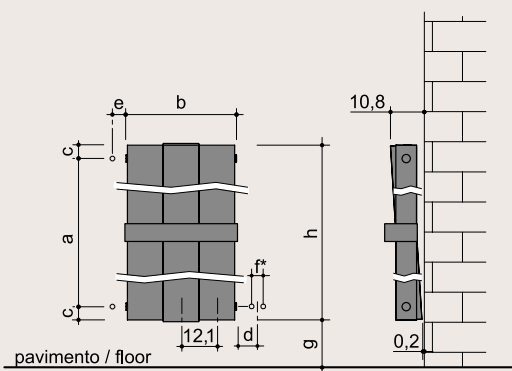
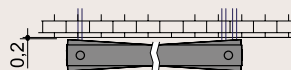
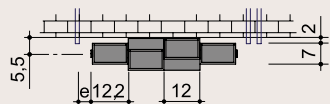
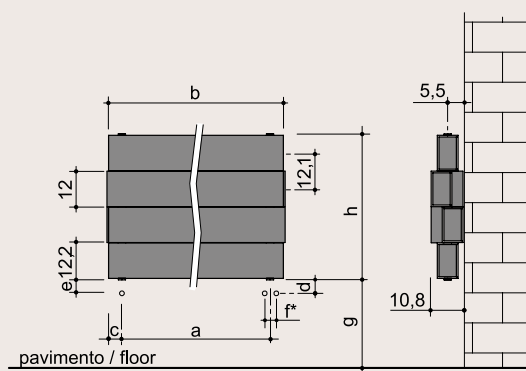
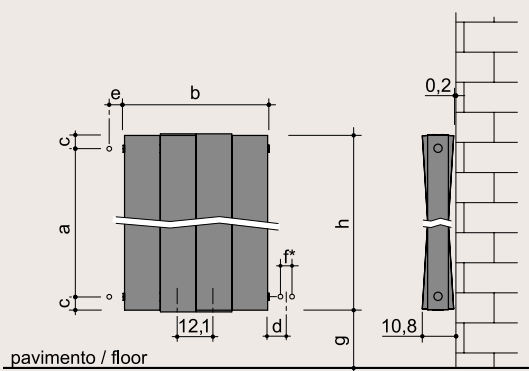
Per connessioni di tipo:
For connections type:



• = posizione diaframma
position of the diverter

g.
Altezza da terra facoltativa
(minimo 10 cm)

g.
Optional height from the floor
(min. 10 Cm)



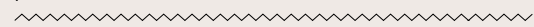


PIANO SHIFT

design meneghella paoletti
associati



Con i suoi elementi disallineati, pare proprio un pianoforte. Un radiatore vivo e in continuo cambiamento, in grado di riempire la stanza con una melodia di design ed eleganza. Ecco l'incontro perfetto tra arte e musica.








With its array of misaligned elements, this radiator really looks like a piano. Its constantly changing, lively appearance permeates the environment with a counterpoint of style and elegance. A perfect encounter between art and music.



*Finitura fotografata in queste pagine:
Blu 700 sablè.*

*Finish photographed on these pages:
Blu 700 sablè.*

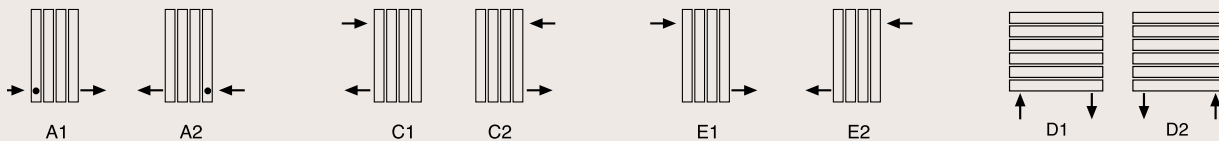
PIANO SHIFT

hxb (cm)	n numero elementi/ elements number	peso a vuoto/ weight empty (kg)	volume d'acqua/ water volume (dm ³)	a (cm)	c (cm)	d* (cm)	e* (cm)	f** (cm)	Qs resa termica/ thermal yield Δt 50°C (watt)	Q potenza elettrica/ electrical power (watt)	versione mista* / combined version*	fissa / not opening	fissa** / not opening**
													
VERTICALE													
60x36,6	3	5,8	0,47	50	5	6,4	4,5	3,8	523	-	-	●	-
60x48,7	4	7,7	0,63	50	5	6,4	4,5	3,8	697	-	-	●	-
60x60,8	5	9,6	0,79	50	5	6,4	4,5	3,8	871	-	-	●	-
60x72,9	6	11,6	0,94	50	5	6,4	4,5	3,8	1045	-	-	●	-
60x85	7	13,5	1,10	50	5	6,4	4,5	3,8	1219	-	-	●	-
60x97,1	8	15,4	1,26	50	5	6,4	4,5	3,8	1394	-	-	●	-
60x109,2	9	17,4	1,41	50	5	6,4	4,5	3,8	1568	-	-	●	-
70x36,6	3	6,8	0,53	60	5	6,4	4,5	3,8	602	-	-	●	-
70x48,7	4	9,1	0,70	60	5	6,4	4,5	3,8	803	-	-	●	-
70x60,8	5	11,4	0,87	60	5	6,4	4,5	3,8	1004	-	-	●	-
70x72,9	6	13,6	1,05	60	5	6,4	4,5	3,8	1204	-	-	●	-
70x85	7	15,9	1,22	60	5	6,4	4,5	3,8	1405	-	-	●	-
70x97,1	8	18,2	1,40	60	5	6,4	4,5	3,8	1606	-	-	●	-
70x109,2	9	20,4	1,57	60	5	6,4	4,5	3,8	1807	-	-	●	-
90x36,6	3	8,9	0,63	80	5	6,4	4,5	3,8	754	-	-	●	-
90x48,7	4	11,8	0,84	80	5	6,4	4,5	3,8	1006	-	-	●	-
90x60,8	5	14,8	1,05	80	5	6,4	4,5	3,8	1257	-	-	●	-
90x72,9	6	17,7	1,26	80	5	6,4	4,5	3,8	1509	-	-	●	-
90x85	7	20,7	1,47	80	5	6,4	4,5	3,8	1760	-	-	●	-
90x97,1	8	23,6	1,68	80	5	6,4	4,5	3,8	2012	-	-	●	-
90x109,2	9	26,6	1,89	80	5	6,4	4,5	3,8	2263	-	-	●	-
130x36,6	3	13,0	0,84	120	5	6,4	4,5	3,8	1035	-	-	●	-
160x36,6	3	16,0	1,00	150	5	6,4	4,5	3,8	1035	-	-	●	-
190x36,6	3	19,1	1,16	180	5	6,4	4,5	3,8	1035	-	-	●	-
190x48,7	4	25,5	1,55	180	5	6,4	4,5	3,8	1380	-	-	●	-
190x60,8	5	31,9	1,93	180	5	6,4	4,5	3,8	1725	-	-	●	-
190x72,9	6	38,3	2,32	180	5	6,4	4,5	3,8	2070	-	-	●	-
ORIZZONTALE													
48,7x70	4	9,1	0,70	60	5	6,4	4,5	3,8	344	-	-	-	●
60,8x70	5	11,4	0,87	60	5	6,4	4,5	3,8	430	-	-	-	●
72,9x70	6	13,6	1,05	60	5	6,4	4,5	3,8	516	-	-	-	●
48,7x90	4	11,8	0,84	80	5	6,4	4,5	3,8	431	-	-	-	●
60,8x90	5	14,8	1,05	80	5	6,4	4,5	3,8	539	-	-	-	●
72,9x90	6	17,7	1,26	80	5	6,4	4,5	3,8	647	-	-	-	●
48,7x190	4	25,5	1,55	180	5	6,4	4,5	3,8	591	-	-	-	●
60,8x190	5	31,9	1,93	180	5	6,4	4,5	3,8	739	-	-	-	●
72,9x90	6	38,3	2,32	180	5	6,4	4,5	3,8	887	-	-	-	●

* utilizzando valvole Ridea / using Ridea valves

** interasse per impianto monotubo utilizzando valvole Ridea / centre to centre distance for single pipe water systems using Ridea valves.

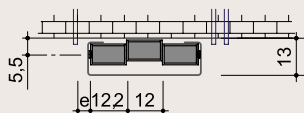
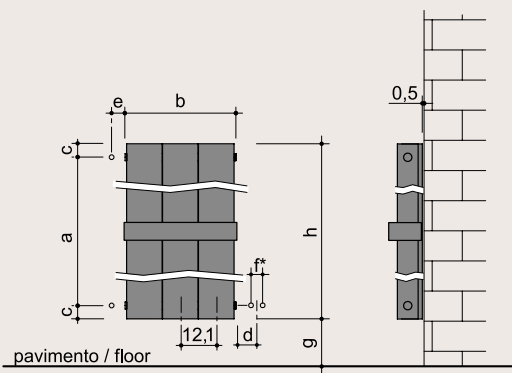
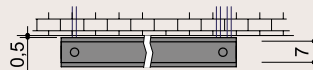
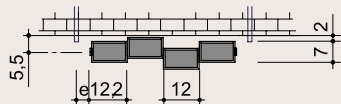
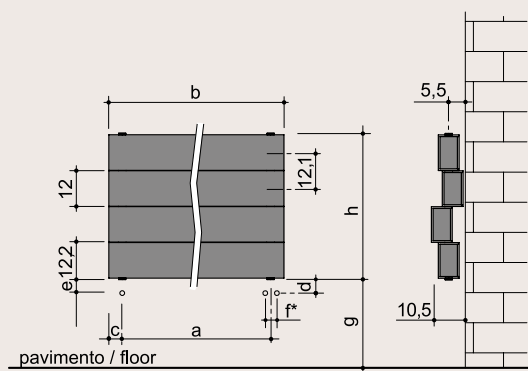
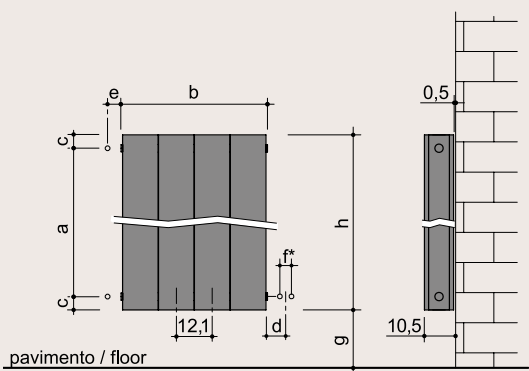
Per connessioni di tipo:
For connections type:



• = posizione diaframma
position of the diverter

g.
Altezza da terra facoltativa
(minimo 10 cm)

g.
Optional height from the floor
(min. 10 Cm)







SCHEMA BIRD, CAT, WOLLY

design meneghello paoelli
associati

~~~~~  
Sembra di sentirlo cinguettare. È il radiatore Schema Bird in cui la figura del volatile è ottenuta interpretando con fantasia il modello Schema Plain.

Schema Cat è un radiatore multifunzionale. Il corpo del termoarredo sagomato a forma di gatto è destinato a scaldare la camera dei bambini oppure l'ambiente bagno nella versione con il tubo flessibile che simula il collare dell'animale e adibito a porta salviette.

Dalle linee arrotondate e con due buffe zanne prominenti il radiatore Wolly assume le sembianze di un simpatico tricheco. Il muso dell'animale è ottenuto con pochi tagli stilizzati sull'ampia superficie radiante realizzata in alluminio.

~~~~~  
You expect it to start chirping any moment: it is the Schema Bird radiator featuring a bird-like image obtained by reinterpreting with imagination the Schema Plain.

Schema Cat is a multifunctional radiator. With its original cat-shaped body, this radiator goes well in a child's room, or, in its version with a hose simulating a cat collar and serving as a towel warmer, in a bathroom.








With its rounded lines and funny elongated tusks, Schema Wolly takes on the appearance of a friendly walrus. The animal's muzzle has been obtained with a few stylised signs cut into a large radiant surface made from aluminium.

*Finiture fotografate in queste pagine:
Blu chiaro RAL 5012, Bianco puro RAL 9010 sablè,
Champagnafrosty SAP 10020.*

*Finishes photographed on these pages:
Blu chiaro RAL 5012, Bianco puro RAL 9010 sablè,
Champagnafrosty SAP 10020.*

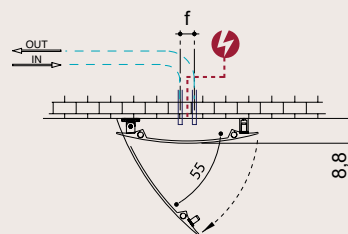
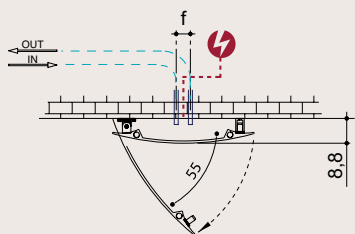
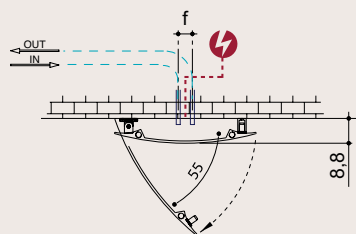
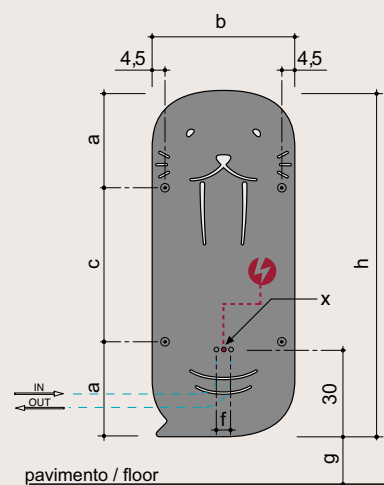
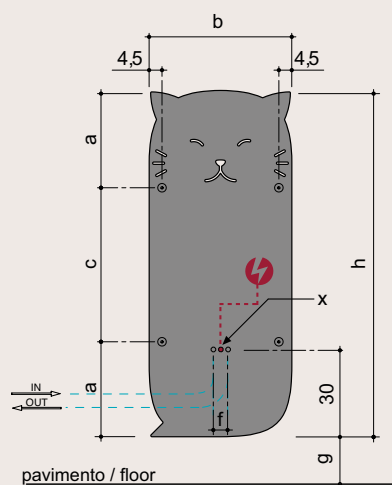
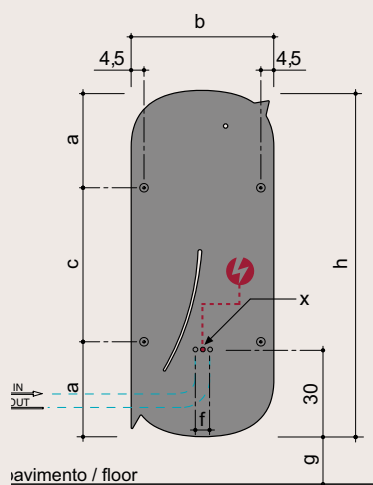


SCHEMA BIRD, CAT, WOLLY

hxb (cm)	peso a vuoto / weight empty (kg)	volume d'acqua / water volume (dm ³)	a (cm)	c (cm)	d (cm)	f** (cm)	z (cm)	Qs resa termica / thermal yield Δt 50°C (watt)	Q potenza elettrica / electrical power (watt)	versione mista* / combined version*	fissa / not opening	apribile / opening	fissa / not opening	apribile / opening
														
120x49	16,6	0,66	33,0	54,0	-	5,0	-	625	500	•	-	•	-	-

~~~~~  
\* a richiesta con sovrapprezzo / upon request with surcharge

\*\* interasse disponibile anche per impianto monotubo / Centre to centre distance  
available for single pipe water systems



**x.**  
Posizione ingresso a muro del cavo (per versione elettrica)

**g.**  
Altezza da terra facoltativa (minimo 10 cm)

**x.**  
Electrical wire wall entry position (for electric version)

**g.**  
Optional height from the floor (min. 10 Cm)





# EXTRÒ DECO

design meneghello paoelli  
associati

~~~~~

Un radiatore che da elemento di arredo si trasforma in una vera e propria opera d'arte. È la storia di Extrò Decò, il prezioso sistema riscaldante nato da un'evoluzione del modello Extrò. A farla da protagonista è il disegno damascato riproposto in chiave contemporanea che veste l'ampia superficie del termoarredo. Un decoro raffinato che si inserisce con eleganza nei contesti abitativi di oggi, realizzato con una tecnica innovativa che dà un effetto tridimensionale.








~~~~~

A radiator that has evolved from furnishing element to work of art. This is the story of Extrò Decò, the precious heating element developed from the Extrò model. The damask pattern reinterpreted with a contemporary flair that extends over its entire surface is its key feature. With its highly refined design, obtained with an innovative technique that produces a three-dimensional effect, it provides an elegant addition to today's home.

*Finitura fotografata in questa pagine:  
Marron d'Inde SW208F.*

*Finish photographed on these pages:  
Marron d'Inde SW208F.*

# EXTRÓ DECÒ

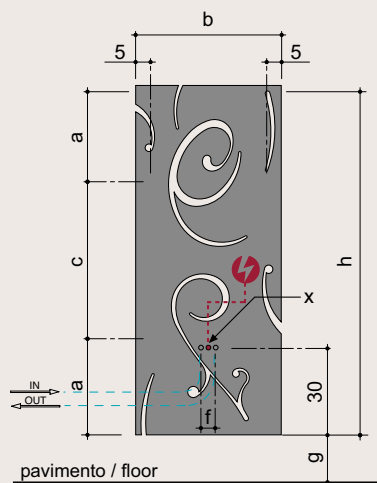
| hxb<br>(cm) | peso a<br>vuoto /<br>weight<br>empty<br>(kg) | volume<br>d'acqua /<br>water<br>volume<br>(dm <sup>3</sup> ) | a<br>(cm) | c<br>(cm) | d<br>(cm) | f**<br>(cm) | z***<br>(cm) | Qs resa<br>termica /<br>thermal yield<br>$\Delta t$ 50°C<br>(watt)                | Q potenza<br>elettrica /<br>electrical<br>power<br>(watt)                           | versione<br>mista* /<br>combined<br>version*                                        | fissa /<br>not<br>opening                                                           | apribile /<br>opening                                                               | fissa /<br>not opening                                                              | apribile /<br>opening                                                               |
|-------------|----------------------------------------------|--------------------------------------------------------------|-----------|-----------|-----------|-------------|--------------|-----------------------------------------------------------------------------------|-------------------------------------------------------------------------------------|-------------------------------------------------------------------------------------|-------------------------------------------------------------------------------------|-------------------------------------------------------------------------------------|-------------------------------------------------------------------------------------|-------------------------------------------------------------------------------------|
|             |                                              |                                                              |           |           |           |             |              |  |  |  |  |  |  |  |
| 120x50      | 17,0                                         | 0,68                                                         | 33,0      | 54,0      | -         | 5,0         | 4,5          | 640                                                                               | 500                                                                                 | •                                                                                   | •                                                                                   | •                                                                                   | -                                                                                   | -                                                                                   |
| 150x50      | 21,0                                         | 0,85                                                         | 33,0      | 84,0      | -         | 5,0         | 4,5          | 780                                                                               | 600                                                                                 | •                                                                                   | •                                                                                   | •                                                                                   | -                                                                                   | -                                                                                   |
| 180x50      | 26,0                                         | 1,02                                                         | 33,0      | 114,0     | -         | 5,0         | 4,5          | 925                                                                               | 800                                                                                 | •                                                                                   | •                                                                                   | •                                                                                   | -                                                                                   | -                                                                                   |

\* a richiesta con sovrapprezzo solo per versione apribile / upon request with surcharge for opening version only

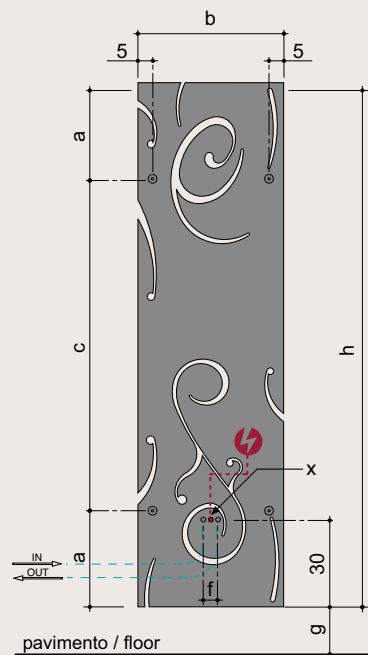
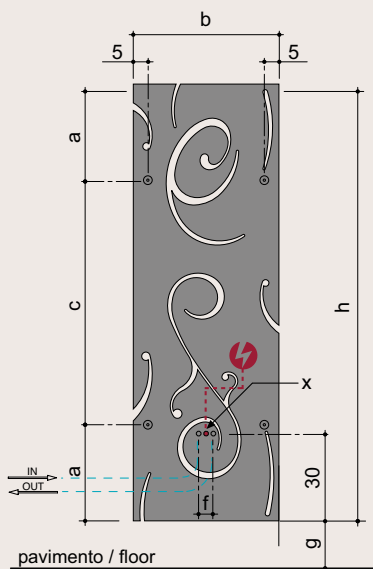
\*\* interasse disponibile anche per impianto monotubo / available centre to centre

distance also for single pipe water systems

\*\*\* utilizzando valvole Ridea / using Ridea valves

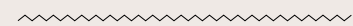


versione apribile  
opening version



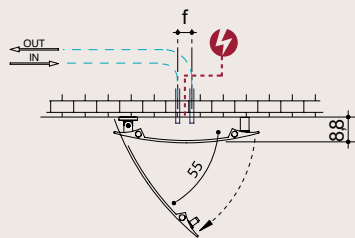
**x.**  
Posizione ingresso a muro del cavo (per versione elettrica)

**g.**  
Altezza da terra facoltativa (minimo 10 cm)

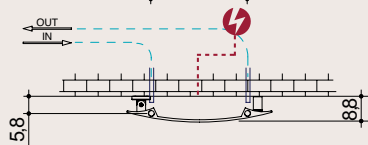
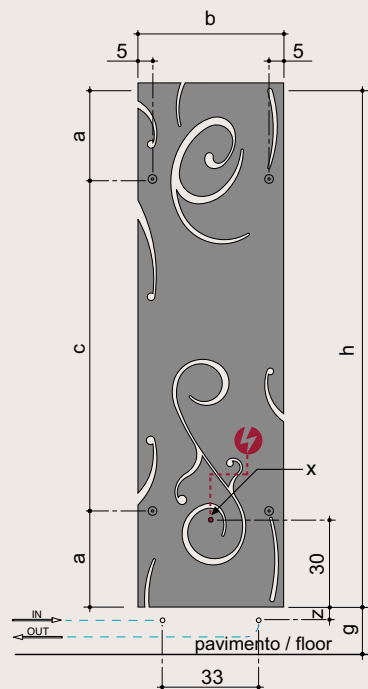
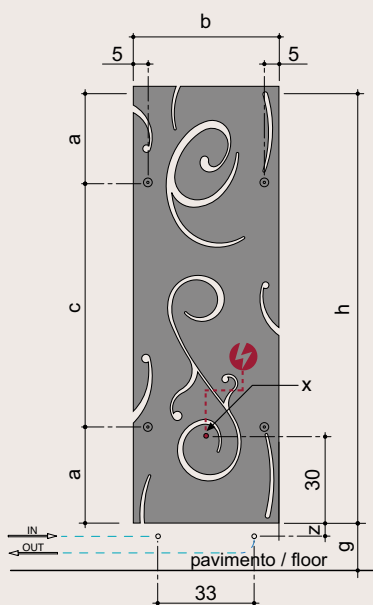
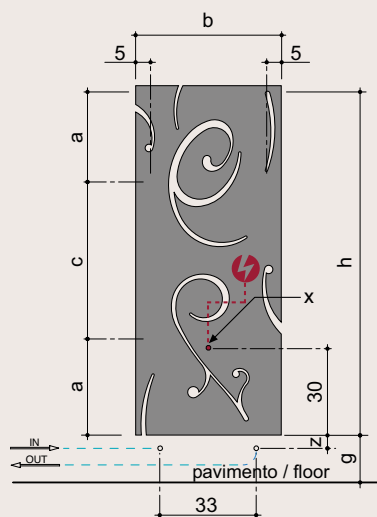


**x.**  
Electrical wire wall entry position (for electric version)

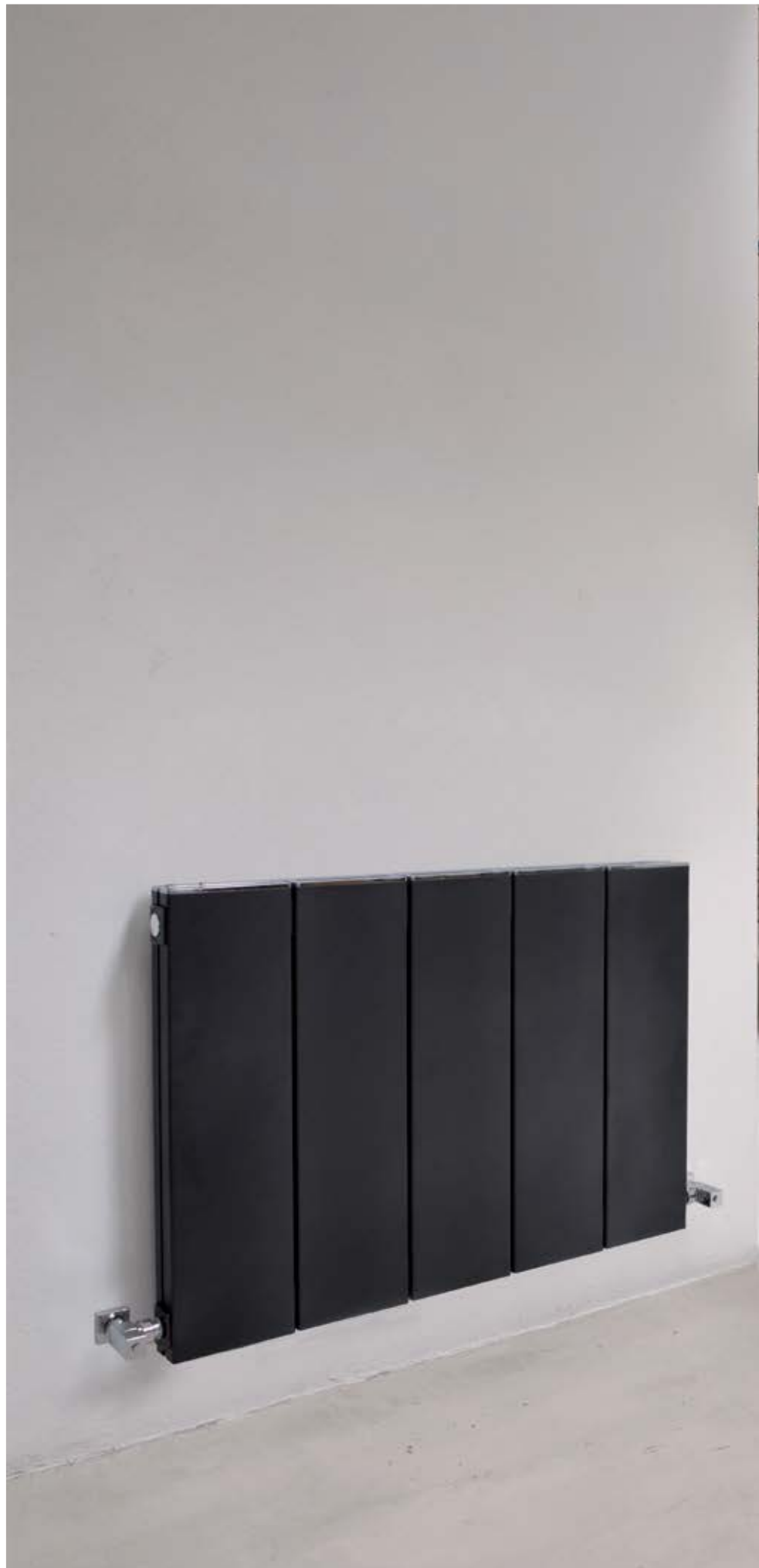
**g.**  
Optional height from the floor (min. 10 Cm)



versione fissa  
not opening version









# BLOK LIGHT

design ridea

~~~~~

Leggerezza e funzionalità, ecco le parole che meglio rappresentano Blok Light. Una versione completamente in alluminio di Blok Living in cui gli elementi cromati sono ridotti al minimo: un modello per chi ama il design nella sua semplicità.

~~~~~

Lightness and functionality, here are the keywords that best represents Blok Light. A new version of Blok Living made entirely in aluminium in which the chromed elements are minimized: a model for those who seek beauty in their daily life.

*Finitura fotografata in questa pagine:*

*Noir 200 sablè SW306F,*





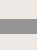
*Bianco traffico RAL 9016 opaco.*

*Finish photographed on these pages:*

*Noir 200 sablè SW306F,*

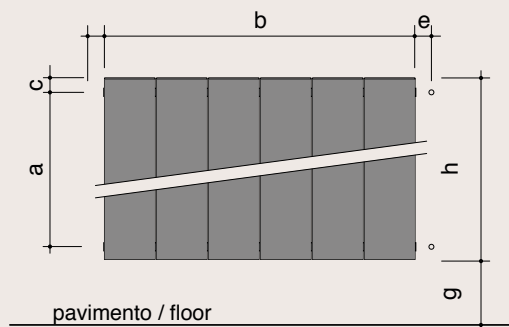
*Bianco traffico RAL 9016 matt.*

# BLOK LIGHT

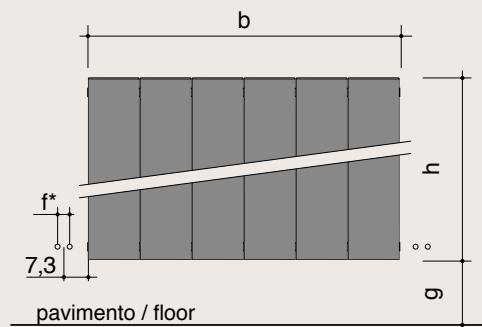
| a<br>interasse<br>(cm) | n<br>numero<br>elementi/<br>number<br>of elements | peso a vuoto<br>weight<br>empty<br>(kg) | volume<br>d'acqua<br>water<br>volume<br>(dm <sup>3</sup> ) | h<br>(cm) | b<br>(cm)           | c<br>(cm) | e**<br>(cm) | f*<br>(cm) | Qs resa<br>termica/<br>thermal<br>yield<br>Δt 50°C<br>(watt)                        | Q potenza<br>elettrica/<br>electrical<br>power<br>(watt)                            | versione<br>mista/<br>combined<br>version                                           | fissa/<br>not opening                                                               | fissa/<br>not opening                                                               |
|------------------------|---------------------------------------------------|-----------------------------------------|------------------------------------------------------------|-----------|---------------------|-----------|-------------|------------|-------------------------------------------------------------------------------------|-------------------------------------------------------------------------------------|-------------------------------------------------------------------------------------|-------------------------------------------------------------------------------------|-------------------------------------------------------------------------------------|
|                        |                                                   |                                         |                                                            |           |                     |           |             |            |  |  |  |  |  |
| 35                     | 1                                                 | 1,5                                     | 0,39                                                       | 43,5      | 16,8x(n-1)<br>+16,3 | 4,5       | 4,8         | 3,8        | 117                                                                                 | -                                                                                   | -                                                                                   | ●                                                                                   | -                                                                                   |
| 50                     | 1                                                 | 2                                       | 0,44                                                       | 58,5      |                     | 4,5       | 4,8         | 3,8        | 178                                                                                 | -                                                                                   | -                                                                                   | ●                                                                                   | -                                                                                   |
| 60                     | 1                                                 | 2,4                                     | 0,47                                                       | 68,5      |                     | 4,5       | 4,8         | 3,8        | 202                                                                                 | -                                                                                   | -                                                                                   | ●                                                                                   | -                                                                                   |
| 80                     | 1                                                 | 3,1                                     | 0,53                                                       | 88,5      |                     | 4,5       | 4,8         | 3,8        | 248                                                                                 | -                                                                                   | -                                                                                   | ●                                                                                   | -                                                                                   |
| 120                    | 1                                                 | 4,5                                     | 0,66                                                       | 128,5     |                     | 4,5       | 4,8         | 3,8        | 301                                                                                 | -                                                                                   | -                                                                                   | ●                                                                                   | -                                                                                   |
| 150                    | 1                                                 | 5,5                                     | 0,75                                                       | 158,5     |                     | 4,5       | 4,8         | 3,8        | 358                                                                                 | -                                                                                   | -                                                                                   | ●                                                                                   | -                                                                                   |
| 180                    | 1                                                 | 6,8                                     | 0,84                                                       | 188,5     |                     | 4,5       | 4,8         | 3,8        | 414                                                                                 | -                                                                                   | -                                                                                   | ●                                                                                   | -                                                                                   |

\* interasse per impianto monotubo utilizzando valvole Ridea / Centre to centre  
distance for monopipe system using Ridea valves

\*\* utilizzando valvole Ridea / using Ridea valves



Per impianto bitubo  
For double-pipes plant



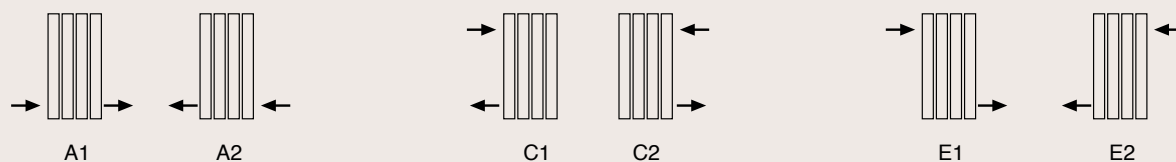
Per impianto monotubo  
For mono-pipe plant

*g.*  
Altezza da terra facoltativa  
(minimo 10 cm)

~~~~~

g.
Optional height from the floor
(min. 10 Cm)

Per connessioni di tipo:
For connections type:



SCHEMA COLLECTION



reddot award 2014
winner



SCHEMA BELT / design meneghello paoelli associati

dimesioni / size (cm) | resa termica / thermal yield (watt): 120x49 (625W),
150x49 (764W), 180x49 (908W)



SCHEMA LOOP / design meneghello paoelli associati

dimesioni / size (cm) | resa termica / thermal yield (watt): 120x49 (429W),
150x49 (511W), 180x49 (608W)



SCHEMA PLAIN / design meneghello paoelli associati

dimesioni / size (cm) | resa termica / thermal yield (watt): 120x49 (625W),
150x49 (764W), 180x49 (908W)





EXTRÓ S / design ridea

dimensioni / size (cm) | resa termica / thermal yield (watt): 120x50 (640W), 150x50 (780W), 180x50 (925W)



EXTRÓ E / design ridea

dimensioni / size (cm) | resa termica / thermal yield (watt): 120x50 (550W), 150x50 (680W), 180x50 (815W)

OTHELLO COLLECTION



OTHELLO MONO / design ridea

dimesioni / size (cm) | resa termica / thermal yield (watt): 181x20 (421W), 181x30 (421W)



OTHELLO WING / design ridea

dimesioni / size (cm) | resa termica / thermal yield (watt): 20x61 (130W), 20x91 (192W), 20x121 (256W), 20x151 (321W)



OTHELLO TWIN / design ridea

dimesioni / size (cm) | resa termica / thermal yield (watt): 181x45 (789W)





OTHELLO ZENITH / design ridea

dimesioni / size (cm) | resa termica / thermal yield (watt): 50 (130W), 60 (147W), 80 (180W), 160 (299W), 180 (326W), 200 (352W)



OTHELLO PLATE / design ridea

dimesioni / size (cm) | resa termica / thermal yield (watt): 41x69 (206W), 41x89 (266W), 41x189 (564W), 62x69 (309W), 62x69 (398W), 62x189 (845W), 83x69 (412W), 83x89 (531W), 83x189 (1128W)



OTHELLO DOUBLE PLATE / design ridea

dimesioni / size (cm) | resa termica / thermal yield (watt): 41x69 (411W), 41x89 (531W), 41x189 (1128W), 62x69 (618W), 62x69 (797W), 62x189 (1691W), 83x69 (824W), 83x89 (1062W), 83x189 (2255W)



BLOK COLLECTION



BLOK BATH / design giulio cappellini

~~~~~  
dimensioni / size (cm) | resa termica / thermal yield (watt): 117x44 (618W),  
117x59 (804W), 158x44 (824W), 158x59 (1085W), 176x44 (927W), 176x59  
(1221W)



## **BLOK TOWER / design ridea**

~~~~~  
dimensioni / size (cm) | resa termica / thermal yield (watt): 35 (101W), 50
(133W), 60 (151W), 80 (185W), 180 (334W)



BLOK LIVING / design ridea

~~~~~  
dimensioni / size (cm) | resa termica / thermal yield (watt): 35 (117W), 50 (178W), 60 (202W), 80 (248W), 120 (301W), 150 (358W), 180 (414W)



**BLOK GEMINI / design ridea**

~~~~~  
dimensioni / size (cm) | resa termica / thermal yield (watt): 129x34 (602W), 159x34 (716W), 189x34 (828W)



CLASSIC COLLECTION



FLOWER POWER / design ridea

diametro / diameter (cm) | resa termica / thermal yield (watt): 80 (506W), 100 (727W)



QUADRO-10 / design ridea

dimesioni / size (cm) | resa termica / thermal yield (watt): 105x105 (1036W)



CROK / design ridea

dimesioni / size (cm) | resa termica / thermal yield (watt): 180x50 (913W), 200x60 (1201W)



SMOOTH / design ridea

dimesioni / size (cm) | resa termica / thermal yield (watt): 120x40 (553W),
180x50 (913W), 200x60 (1201W)



SMOOTH PRESTIGE / design ridea

dimesioni / size (cm) | resa termica / thermal yield (watt): 120x40 (553W),
180x50 (913W), 200x60 (1201W)



SILHOUETTE / design ridea

dimesioni / size (cm) | resa termica / thermal yield (watt): 180x40 (772W),
180x50 (941W), 200x60 (1201W)

CLASSIC COLLECTION



EASY / design ridea

dimesioni / size (cm) | resa termica / thermal yield (watt): 100x40 (336W), 120x50 (512W), 120x60 (635W), 150x50 (607W), 150x60 (749W), 180x50 (755W), 180x60 (931W), 180x75 (1122W)



SMILE / design ridea

dimesioni / size (cm) | resa termica / thermal yield (watt): 120x50 (410W), 150x50 (560W)



LEAVES / design ridea

dimesioni / size (cm) | resa termica / thermal yield (watt): 180x50 (818W), 200x60 (1043W)



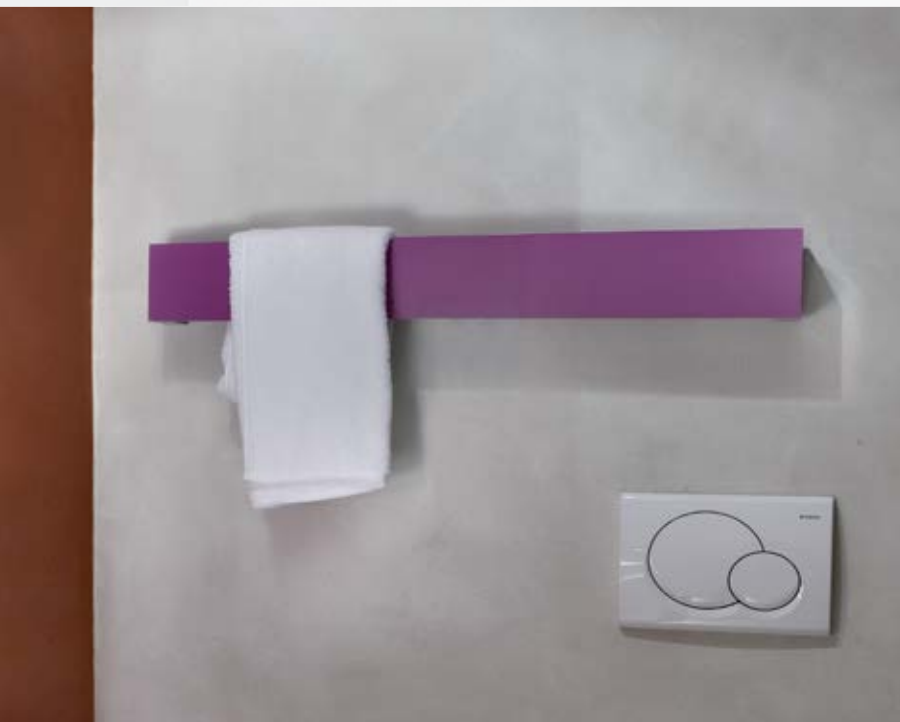
REFLEX / design ridea

dimensioni / size (cm) | resa termica / thermal yield (watt): 90x90 (794W),
150x100 (1372W), 180x90 (1453W)



ROUND / design giulio cappellini

dimensioni / size (cm) | resa termica / thermal yield (watt): 93x93 (700W),
190x93 (1250W)



TOWEL BAR / design ridea

dimensioni / size (cm): 10x60, 10x90, 10x120, 10x150

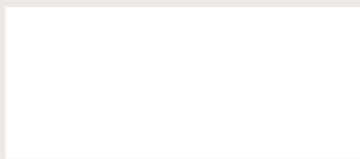


TETRAGON / design ridea

dimensioni / size (cm) | resa termica / thermal yield (watt): 50x50 (260W)

COLORI DISPONIBILI / COLORS AVAILABLE

FINITURE STANDARD / STANDARD FINISHES



RAL 9016
Bianco traffico opaco / matt

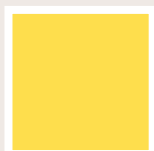
SOLO PER SCHEMA BELT / FOR SCHEMA BELT ONLY



Nylon nero / black

FINITURE DISPONIBILI A RICHIESTA / FINISHES AVAILABLE ON REQUEST

VERNICATURE RAL / RAL PAINTS



RAL 1018
Giallo zinco



RAL 1003
Giallo segnale



RAL 2000
Arancio giallo



RAL 2004
Arancio puro



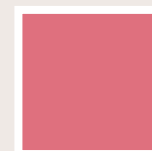
RAL 3000
Rosso fuoco



RAL 3003
Rosso rubino



RAL 3004
Rosso porpora



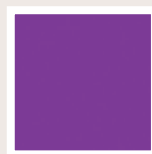
RAL 3014
Rosa antico



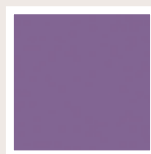
RAL 4003
Viola erika



RAL 4006
Porpora



RAL 4008
Viola segnale



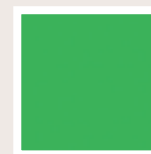
RAL 4001
Rosso lilla



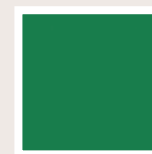
RAL 4004
Viola bordeaux



RAL 8016
Marrone mogano



RAL 6018
Verde giallo



RAL 6001
Verde smeraldo



RAL 5012
Blu chiaro



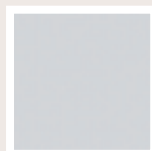
RAL 5015
Blu cielo



RAL 5010
Blu genziana



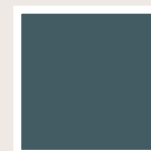
RAL 7008
Grigio kaki



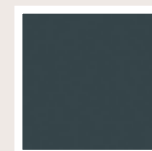
RAL 7035
Grigio luce



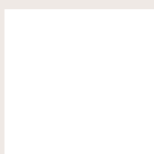
RAL 7005
Grigio topo



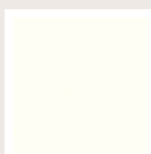
RAL 7025
Grigio perla



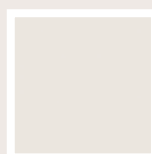
RAL 7024
Grigio grafite



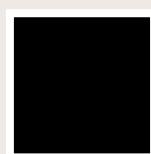
RAL 9016
Bianco traffico



RAL 9010
Bianco puro



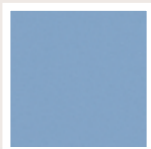
RAL 1013
Bianco perla



RAL 9005
Nero profondo

FINITURE DISPONIBILI A RICHIESTA / FINISHES AVAILABLE ON REQUEST

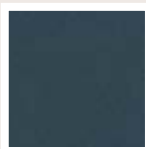
VERNICATURE SPECIALI / SPECIAL PAINTS



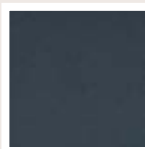
MW5111
Gallium



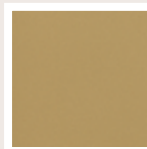
SW327F
Blu 500 sablé



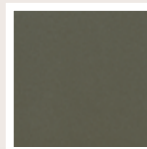
SW305F
Blu 700 sablé



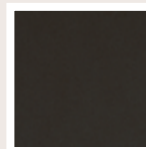
YW357F
Violet 2100 sablé



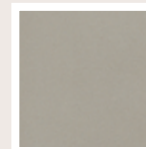
MW136E
Gold



SW205F
Bronze



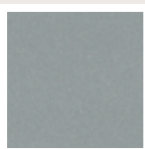
SW208F
Marron d'Inde



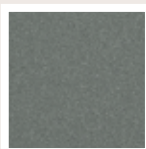
SAP 10020
Champagnafrosty



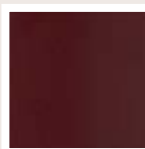
M3000I
Nickel



SAP 13931
Silver satin



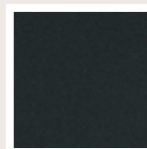
MX302L
Bismuth



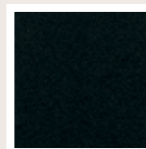
MW600L
Bromine



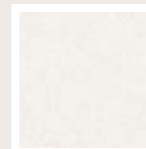
SXJ02F
Noir 163 chiné



SW306F
Noir 200 sablé



SN351F
Noir 900 sablé

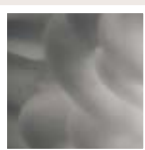


RAL 9010 sablé
Bianco puro

FINITURE SPECIALI / SPECIAL FINISHES



Anodizzato (.15, di serie)
Anodized (.15, standard)



Sfumato (.16, di serie)
Faded (.16, standard)



Foglia oro (.02)
Gold leaf (.02)



Foglia argento (.03)
Silver leaf (.03)

SOLO PER SCHEMA BELT / FOR SCHEMA BELT ONLY



Pelle naturale / natural leather



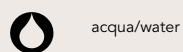
Pelle "testa di moro" / dark brown leather

Le verniciature opache si intendono 30 Gloss. Quando non specificato, le verniciature RAL si intendono lucide (90 Gloss). Ridea garantisce l'impiego di vernici ecologiche. Le finiture speciali possono presentare piccole imperfezioni che non sono difetti ma pregi che testimoniano la lavorazione artigianale. Ridea può applicare modifiche senza preavviso. Tutte le finiture sono indicative.

The matt paint is intended 30 Gloss. When not specified, the RAL paint is gloss (90 gloss). Ridea guarantees the use of ecological paints. Special finishes may have slight imperfections that are not defects but qualities proving the craftsmanship. Ridea can apply changes without notice. All finishes are indicative.

LEGENDA/LEGEND

ALIMENTAZIONE/FEEDING



acqua/water

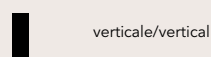


elettrico/electric



versione mista/
combined version

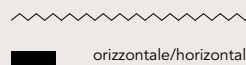
INSTALLAZIONE/INSTALLATION



verticale/vertical



verticale apribile/
vertical opening



orizzontale/horizontal



orizzontale apribile/
horizontal opening

ridea news 2014

Radiatori 2000 Spa
Via Francesca 54/a
24040 Ciserano (Bergamo) Italy
Tel. +39 0354191198
Fax + 39 035883631
info@ridea.it www.ridea.it

credits

Design: officemilano.com
Print: Grafiche Bazzi, Milano

© Ridea 2014

*Tutte le fotografie, le finiture, i dati e le caratteristiche tecniche sono indicative e Ridea può applicare modifiche senza preavviso.
Pictures, finishes, data and technical specifications are indicative, Ridea reserves the right to change or modify them at any time without notice.*