

AN·TRAX IT

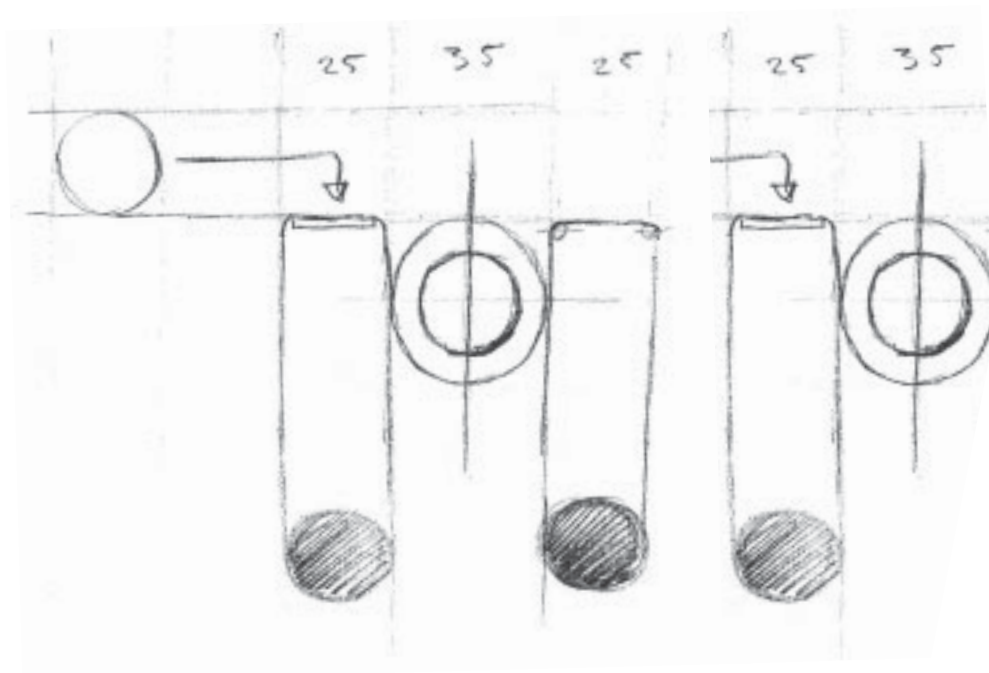
HOME

A_25

A_25

Radiatore in acciaio al carbonio caratterizzato da elementi tubolari da 25 mm di diametro.

Disponibile in diverse dimensioni e oltre 200 varianti cromatiche. Può essere installato sia in verticale che in orizzontale.





*Radiator made of tubular,
carbon steel elements
(diameter 25 mm).
Comes in various sizes and in
more than 200 colours. Can
be installed on the vertical or
horizontal.*

*Radiateur en acier au carbone
caractérisé par des éléments
tubulaires de 25 mm de
diamètre.
Disponible en différentes
dimensions et en plus de 200
variantes chromatiques. Il
peut être installé aussi bien
aussi bien verticalement que
horizontalement*





Home / AV25d
200 x 36.8 cm
WATT ΔT 50° [1343]
COLOR : BIAN

INFORMAZIONI TECNICHE / TECHNICAL DETAILS / DONNÉES
TECHNIQUES / TECHNISCHE DATEN / INFORMACIONES TÉCNICAS
PAGE 263

Heizkörper aus Kohlenstoffstahl, bestehend aus Rundrohren mit einem Durchmesser von 25 mm. In verschiedenen Größen und über 200 Farbtönen erhältlich. Kann sowohl vertikal als auch horizontal montiert werden.

Radiador en acero al carbono caracterizado por elementos tubulares de 25 de diámetro. Se encuentra disponible en diversos tamaños y más de 200 variantes cromáticas. Se puede instalar tanto en vertical como en horizontal.

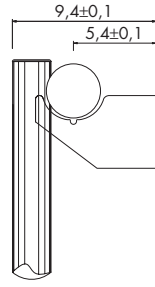
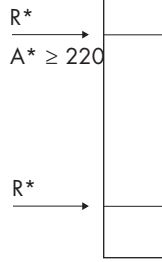
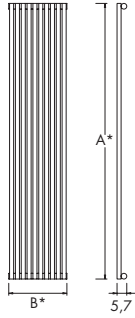


Home / A025d
51.2 x 120 cm
WATT ΔT 50° [1303]
COLOR : GRPR

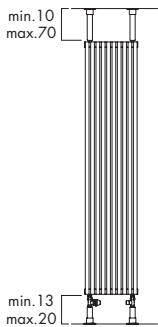
INFORMAZIONI TECNICHE / TECHNICAL DETAILS / DONNÉES
TECHNIQUES / TECNISCHE DATEN / INFORMACIONES TÉCNICAS
PAGE 267



AV25S

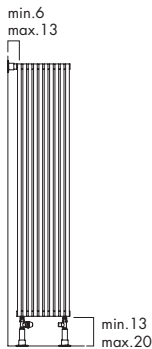


STBVS



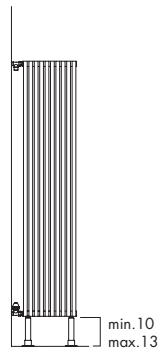
A* ≥ 180
B* ≤ 90

STBVP



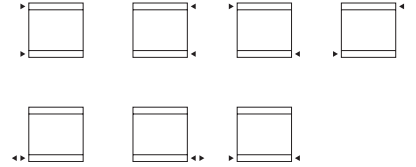
A* ≥ 40
B* ≤ 60

STBVVP

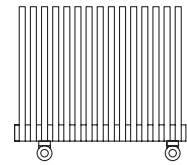


A* ≥ 40
B* ≤ 60

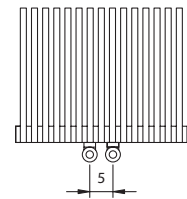
[X] attacco standard
standard connection
raccord standard
standard Anschluss
conexión estándar



[B] attacco speciale
special connection
raccord spéciale
speziell Anschluss
conexión especial



[B5] attacco interasse 5 cm
pipe centres 5 cm
raccords 5 cm
5 cm Achsabstand Anschluss
conexión entre ejes: 5 cm.



P* 296

A*	L*	min. el.	max. el.
40	0.217	6	66
50	0.257	6	66
60	0.296	6	66
70	0.336	6	66
80	0.376	6	66
90	0.416	6	66
100	0.455	6	66
110	0.495	6	66
120	0.535	6	66
130	0.575	6	66
140	0.614	6	66
150	0.654	6	66
160	0.694	6	32
170	0.733	6	32
180	0.773	6	32
190	0.813	6	32
200	0.853	6	32
210	0.892	6	32
220	0.932	6	32
230	0.972	6	32
240	1.012	6	32
250	1.051	6	32
260	1.091	6	32
280	1.171	6	32

A* = altezza / height / hauteur / Höhe / alto B* = larghezza / width / longueur / Breite / ancho P* = pagina / page / page / Seite / página
L* = contenuto acqua / content / volume / Inhalt / volumen R* = rinforzo / reinforcement / renforcement / Verstärkung / refuerzos

Kcal = Watt x 0,860
BTU = Watt x 3,413

Watt Δt 60° = Watt Δt 50° x 1,260
Watt Δt 40° = Watt Δt 50° x 0,754
Watt Δt 30° = Watt Δt 50° x 0,525
Watt Δt 20° = Watt Δt 50° x 0,313

p max = 10.0 bar

Colori/ colours / couleurs / Farbe / colores

[BIAN] B standard
T + 10%
S + 20%
[RAL] S + 20%
RAL non inclusi in tabella
special Ral colours
couleurs Ral spéciales
RAL Farbe nicht in der Tabelle inbegriffen
colores RAL especiales

Ulteriori dettagli
Further details
Ulérieures détails
Weitere Einzelheiten
Otros detalles



P* 294

No. el.	A* / B*		I*	40	50	60	70	80	90	100	110	120	130	140	150
	A*	B*													
6	22,4	31,4		131	159	187	215	242	269	296	323	350	377	404	419
7	26,0	35,0		153	186	218	251	282	314	346	377	409	440	472	489
8	29,6	38,6		175	212	250	286	322	358	395	431	467	503	539	558
9	33,2	42,2		197	239	281	322	363	403	445	485	526	566	607	628
10	36,8	45,8		219	265	312	358	403	448	494	539	584	629	674	698
11	40,4	49,4		241	292	343	394	443	493	543	593	642	692	741	768
12	44,0	53,0		263	318	374	430	484	538	593	647	701	755	809	838
13	47,6	56,6		285	345	406	465	524	582	642	701	759	818	876	907
14	51,2	60,2		307	371	437	501	564	627	692	755	818	881	944	977
15	54,8	63,8		329	398	468	537	605	672	741	809	876	944	1.011	1.047
16	58,4	67,4		350	424	499	573	645	717	790	862	934	1.006	1.078	1.117
17	62,0	71,0		372	451	530	609	685	762	840	916	993	1.069	1.146	1.187
18	65,6	74,6		394	477	562	644	725	806	889	970	1.051	1.132	1.213	1.256
19	69,2	78,2		416	504	593	680	766	851	939	1.024	1.110	1.195	1.281	1.326
20	72,8	81,8		438	530	624	716	806	896	988	1.078	1.168	1.258	1.348	1.396
21	76,4	85,4		460	557	655	752	846	941	1.037	1.132	1.226	1.321	1.415	1.466
22	80,0	89,0		482	583	686	788	887	986	1.087	1.186	1.285	1.384	1.483	1.536
23	83,6	92,6		504	610	718	823	927	1.030	1.136	1.240	1.343	1.447	1.550	1.605
24	87,2	96,2		526	636	749	859	967	1.075	1.186	1.294	1.402	1.510	1.618	1.675
25	90,8	99,8		548	663	780	895	1.008	1.120	1.235	1.348	1.460	1.573	1.685	1.745
26	94,4	103,4		569	689	811	931	1.048	1.165	1.284	1.401	1.518	1.635	1.752	1.815
27	98,0	107,0		591	716	842	967	1.088	1.210	1.334	1.455	1.577	1.698	1.820	1.885
28	101,6	110,6		613	742	874	1.002	1.128	1.254	1.383	1.509	1.635	1.761	1.887	1.954
29	105,2	114,2		635	769	905	1.038	1.169	1.299	1.433	1.563	1.694	1.824	1.955	2.024
30	108,8	117,8		657	795	936	1.074	1.209	1.344	1.482	1.617	1.752	1.887	2.022	2.094
31	112,4	121,4		679	822	967	1.110	1.249	1.389	1.531	1.671	1.810	1.950	2.089	2.164
32	116,0	125,0		701	848	998	1.146	1.290	1.434	1.581	1.725	1.869	2.013	2.157	2.234
33	119,6	128,6		723	875	1.030	1.181	1.330	1.478	1.630	1.779	1.927	2.076	2.224	2.303
34	123,2	132,2		745	901	1.061	1.217	1.370	1.523	1.680	1.833	1.986	2.139	2.292	2.373
35	126,8	135,8		767	928	1.092	1.253	1.411	1.568	1.729	1.887	2.044	2.202	2.359	2.443
36	130,4	139,4		788	954	1.123	1.289	1.451	1.613	1.778	1.940	2.102	2.264	2.426	2.513
37	134,0	143,0		810	981	1.154	1.325	1.491	1.658	1.828	1.994	2.161	2.327	2.494	2.583
38	137,6	146,6		832	1.007	1.186	1.360	1.531	1.702	1.877	2.048	2.219	2.390	2.561	2.652
39	141,2	150,2		854	1.034	1.217	1.396	1.572	1.747	1.927	2.102	2.278	2.453	2.629	2.722
40	144,8	153,8		876	1.060	1.248	1.432	1.612	1.792	1.976	2.156	2.336	2.516	2.696	2.792
41	148,4	157,4		898	1.087	1.279	1.468	1.652	1.837	2.025	2.210	2.394	2.579	2.763	2.862
42	152,0	161,0		920	1.113	1.310	1.504	1.693	1.882	2.075	2.264	2.453	2.642	2.831	2.932
43	155,6	164,6		942	1.140	1.342	1.539	1.733	1.926	2.124	2.318	2.511	2.705	2.898	3.001
44	159,2	168,2		964	1.166	1.373	1.575	1.773	1.971	2.174	2.372	2.570	2.768	2.966	3.071
45	162,8	171,8		986	1.193	1.404	1.611	1.814	2.016	2.223	2.426	2.628	2.831	3.033	3.141
46	166,4	175,4		1.007	1.219	1.435	1.647	1.854	2.061	2.272	2.479	2.686	2.893	3.100	3.211
47	170,0	179,0		1.029	1.246	1.466	1.683	1.894	2.106	2.322	2.533	2.745	2.956	3.168	3.281
48	173,6	182,6		1.051	1.272	1.498	1.718	1.934	2.150	2.371	2.587	2.803	3.019	3.235	3.350
49	177,2	186,2		1.073	1.299	1.529	1.754	1.975	2.195	2.421	2.641	2.862	3.082	3.303	3.420
50	180,8	189,8		1.095	1.325	1.560	1.790	2.015	2.240	2.470	2.695	2.920	3.145	3.370	3.490

I*		36 cm	46 cm	56 cm	66 cm	76 cm	86 cm	96 cm	106 cm	116 cm	126 cm	136 cm	146 cm
----	--	-------	-------	-------	-------	-------	-------	-------	--------	--------	--------	--------	--------

A* = altezza / height / hauteur / Höhe / alto B* = larghezza / width / longueur / Breite / ancho
 I* = interasse / pipe centres / distance entre depart et retour / Achsabstand / distancia entre las conexiones

AV25s

Watt Δt 50°

No. el.	A* / B*		I*	40	50	60	70	80	90	100	110	120	130	140	150
	A*	B*													
51	184,4	193,4	1.117	1.352	1.591	1.826	2.055	2.285	2.519	2.749	2.978	3.208	3.437	3.560	
52	188,0	197,0	1.139	1.378	1.622	1.862	2.096	2.330	2.569	2.803	3.037	3.271	3.505	3.630	
53	191,6	200,6	1.161	1.405	1.654	1.897	2.136	2.374	2.618	2.857	3.095	3.334	3.572	3.699	
54	195,2	204,2	1.183	1.431	1.685	1.933	2.176	2.419	2.668	2.911	3.154	3.397	3.640	3.769	
55	198,8	207,8	1.205	1.458	1.716	1.969	2.217	2.464	2.717	2.965	3.212	3.460	3.707	3.839	
56	202,4	211,4	1.226	1.484	1.747	2.005	2.257	2.509	2.766	3.018	3.270	3.522	3.774	3.909	
57	206,0	215,0	1.248	1.511	1.778	2.041	2.297	2.554	2.816	3.072	3.329	3.585	3.842	3.979	
58	209,6	218,6	1.270	1.537	1.810	2.076	2.337	2.598	2.865	3.126	3.387	3.648	3.909	4.048	
59	213,2	222,2	1.292	1.564	1.841	2.112	2.378	2.643	2.915	3.180	3.446	3.711	3.977	4.118	
60	216,8	225,8	1.314	1.590	1.872	2.148	2.418	2.688	2.964	3.234	3.504	3.774	4.044	4.188	
61	220,4	229,4	1.336	1.617	1.903	2.184	2.458	2.733	3.013	3.288	3.562	3.837	4.111	4.258	
62	224,0	233,0	1.358	1.643	1.934	2.220	2.499	2.778	3.063	3.342	3.621	3.900	4.179	4.328	
63	227,6	236,6	1.380	1.670	1.966	2.255	2.539	2.822	3.112	3.396	3.679	3.963	4.246	4.397	
64	231,2	240,2	1.402	1.696	1.997	2.291	2.579	2.867	3.162	3.450	3.738	4.026	4.314	4.467	
65	234,8	243,8	1.424	1.723	2.028	2.327	2.620	2.912	3.211	3.504	3.796	4.089	4.381	4.537	
66	238,4	247,4	1.445	1.749	2.059	2.363	2.660	2.957	3.260	3.557	3.854	4.151	4.448	4.607	

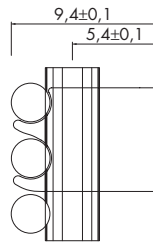
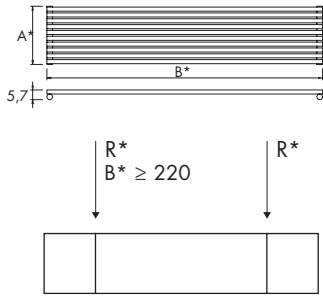
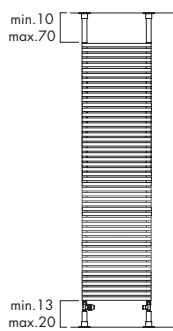
I*	36 cm	46 cm	56 cm	66 cm	76 cm	86 cm	96 cm	106 cm	116 cm	126 cm	136 cm	146 cm

A* = altezza / height / hauteur / Höhe / alto B* = larghezza / width / longueur / Breite / ancho
 I* = interasse / pipe centres / distance entre depart et retour / Achsabstand / distancia entre las conexiones

No. el.	A* B*	I*	160	170	180	190	200	210	220	230	240	250	260	280
6	22,4	31,4	431	456	481	505	530	554	579	604	628	672	697	748
7	26,0	35,0	503	532	561	589	618	647	676	704	733	784	813	873
8	29,6	38,6	575	608	641	674	706	739	772	805	838	896	930	998
9	33,2	42,2	647	684	721	758	795	832	869	905	942	1.008	1.046	1.122
10	36,8	45,8	719	760	801	842	883	924	965	1.006	1.047	1.120	1.162	1.247
11	40,4	49,4	791	836	881	926	971	1.016	1.062	1.107	1.152	1.232	1.278	1.372
12	44,0	53,0	863	912	961	1.010	1.060	1.109	1.158	1.207	1.256	1.344	1.394	1.496
13	47,6	56,6	935	988	1.041	1.095	1.148	1.201	1.255	1.308	1.361	1.456	1.511	1.621
14	51,2	60,2	1.007	1.064	1.121	1.179	1.236	1.294	1.351	1.408	1.466	1.568	1.627	1.746
15	54,8	63,8	1.079	1.140	1.202	1.263	1.325	1.386	1.448	1.509	1.571	1.680	1.743	1.871
16	58,4	67,4	1.150	1.216	1.282	1.347	1.413	1.478	1.544	1.610	1.675	1.792	1.859	1.995
17	62,0	71,0	1.222	1.292	1.362	1.431	1.501	1.571	1.641	1.710	1.780	1.904	1.975	2.120
18	65,6	74,6	1.294	1.368	1.442	1.516	1.589	1.663	1.737	1.811	1.885	2.016	2.092	2.245
19	69,2	78,2	1.366	1.444	1.522	1.600	1.678	1.756	1.834	1.911	1.989	2.128	2.208	2.369
20	72,8	81,8	1.438	1.520	1.602	1.684	1.766	1.848	1.930	2.012	2.094	2.240	2.324	2.494
21	76,4	85,4	1.510	1.596	1.682	1.768	1.854	1.940	2.027	2.113	2.199	2.352	2.440	2.619
22	80,0	89,0	1.582	1.672	1.762	1.852	1.943	2.033	2.123	2.213	2.303	2.464	2.556	2.743
23	83,6	92,6	1.654	1.748	1.842	1.937	2.031	2.125	2.220	2.314	2.408	2.576	2.673	2.868
24	87,2	96,2	1.726	1.824	1.922	2.021	2.119	2.218	2.316	2.414	2.513	2.688	2.789	2.993
25	90,8	99,8	1.798	1.900	2.003	2.105	2.208	2.310	2.413	2.515	2.618	2.800	2.905	3.118
26	94,4	103,4	1.869	1.976	2.083	2.189	2.296	2.402	2.509	2.616	2.722	2.912	3.021	3.242
27	98,0	107,0	1.941	2.052	2.163	2.273	2.384	2.495	2.606	2.716	2.827	3.024	3.137	3.367
28	101,6	110,6	2.013	2.128	2.243	2.358	2.472	2.587	2.702	2.817	2.932	3.136	3.254	3.492
29	105,2	114,2	2.085	2.204	2.323	2.442	2.561	2.680	2.799	2.917	3.036	3.248	3.370	3.616
30	108,8	117,8	2.157	2.280	2.403	2.526	2.649	2.772	2.895	3.018	3.141	3.360	3.486	3.741
31	112,4	121,4	2.229	2.356	2.483	2.610	2.737	2.864	2.992	3.119	3.246	3.472	3.602	3.866
32	116,0	125,0	2.301	2.432	2.563	2.694	2.826	2.957	3.088	3.219	3.350	3.584	3.718	3.990

I*	156 cm	166 cm	176 cm	186 cm	196 cm	206 cm	216 cm	226 cm	236 cm	246 cm	256 cm	276 cm
----	--------	--------	--------	--------	--------	--------	--------	--------	--------	--------	--------	--------

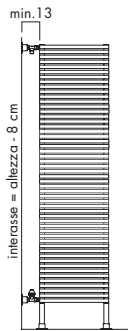
A* = altezza / height / hauteur / Höhe / alto **B*** = larghezza / width / longueur / Breite / ancho
I* = interasse / pipe centres / distance entre depart et retour / Achsabstand / distancia entre las conexiones

**STBOS**

$A^* \leq 230$
 $B^* \leq 90$

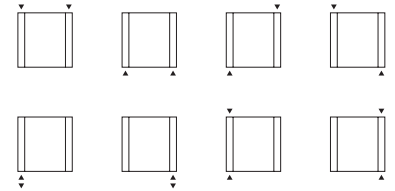
STBOP

$A^* \leq 230$
 $B^* \leq 60$

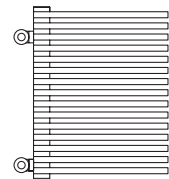
STBOPV

$A^* \leq 230$
 $B^* \leq 60$

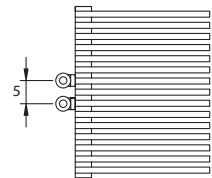
[X] attacco standard
standard connection
raccord standard
standard Anschluss
conexión estándar



[B] attacco speciale
special connection
raccord spéciale
speziell Anschluss
conexión especial



[B5] attacco interasse 5 cm
pipe centres 5 cm
raccords 5 cm
5 cm Achsabstand Anschluss
conexión entre ejes: 5 cm.



P* 296

A*	L*	min. el.	max. el.
40	0.217	6	56
50	0.257	6	56
60	0.296	6	56
70	0.336	6	56
80	0.376	6	56
90	0.416	6	56
100	0.455	6	56
110	0.495	6	56
120	0.535	6	56
130	0.575	6	56
140	0.614	6	56
150	0.654	6	56
160	0.694	6	32
170	0.733	6	32
180	0.773	6	32
190	0.813	6	32
200	0.853	6	32
210	0.892	6	32
220	0.932	6	32
230	0.972	6	32
240	1.012	6	32
250	1.051	6	32
260	1.091	6	32
280	1.171	6	32

A* = altezza / height / hauteur / Höhe / alto **B*** = larghezza / width / longueur / Breite / ancho **P*** = pagina / page / page / Seite / página
L* = contenuto acqua / content / volume / Inhalt / volumen **R*** = rinforzo / reinforcement / renforcement / Verstärkung / refuerzos

Kcal = Watt x 0,860
BTU = Watt x 3,413

Watt Δt 60° = Watt Δt 50° x 1,249
Watt Δt 40° = Watt Δt 50° x 0,762
Watt Δt 30° = Watt Δt 50° x 0,536
Watt Δt 20° = Watt Δt 50° x 0,327

p max = 10.0 bar

Colori/ colours / couleurs / Farbe / colores

[BIAN]

B standard

T + 10%

S + 20%

[RAL]

S + 20%

RAL non inclusi in tabella
special Ral colours
couleurs Ral spéciales
RAL Farbe nicht in der Tabelle inbegriffen
colores RAL especiales

Ulteriori dettagli
Further details
Ulérieures détails
Weitere Einzelheiten
Otros detalles



P* 294

No. el.	B*		I*	40	50	60	70	80	90	100	110	120	130	140	150
	A*														
6	22.4		31.4	120	150	180	210	240	269	299	329	359	389	419	449
7	26.0		35.0	140	175	210	245	279	314	349	384	419	454	489	524
8	29.6		38.6	160	200	240	279	319	359	399	439	479	519	559	599
9	33.2		42.2	180	225	269	314	359	404	449	494	539	584	629	674
10	36.8		45.8	200	250	299	349	399	449	499	549	599	649	699	749
11	40.4		49.4	220	274	329	384	439	494	549	604	659	714	768	823
12	44.0		53.0	240	299	359	419	479	539	599	659	719	778	838	898
13	47.6		56.6	259	324	389	454	519	584	649	714	778	843	908	973
14	51.2		60.2	279	349	419	489	559	629	699	768	838	908	978	1 048
15	54.8		63.8	299	374	449	524	599	674	749	823	898	973	1 048	1 123
16	58.4		67.4	319	399	479	559	639	719	798	878	958	1 038	1 118	1 198
17	62.0		71.0	339	424	509	594	679	763	848	933	1 018	1 103	1 188	1 272
18	65.6		74.6	359	449	539	629	718	808	898	988	1 078	1 167	1 257	1 347
19	69.2		78.2	378	473	567	662	756	851	946	1 040	1 135	1 229	1 324	1 418
20	72.8		81.8	397	497	596	695	794	894	993	1 092	1 192	1 291	1 390	1 490
21	76.4		85.4	416	520	624	728	832	936	1 041	1 145	1 249	1 353	1 457	1 561
22	80.0		89.0	435	544	653	762	870	979	1 088	1 197	1 306	1 414	1 523	1 632
23	83.6		92.6	454	568	681	795	908	1 022	1 136	1 249	1 363	1 476	1 590	1 703
24	87.2		96.2	473	592	710	828	946	1 065	1 183	1 301	1 420	1 538	1 656	1 775
25	90.8		99.8	492	615	738	861	984	1 107	1 231	1 354	1 477	1 600	1 723	1 846
26	94.4		103.4	511	639	767	895	1 022	1 150	1 278	1 406	1 534	1 661	1 789	1 917
27	98.0		107.0	530	662	794	927	1 059	1 191	1 324	1 456	1 589	1 721	1 853	1 986
28	101.6		110.6	548	685	822	959	1 096	1 233	1 370	1 506	1 643	1 780	1 917	2 054
29	105.2		114.2	566	708	849	991	1 132	1 274	1 415	1 557	1 698	1 840	1 981	2 123
30	108.8		117.8	584	731	877	1 023	1 169	1 315	1 461	1 607	1 753	1 899	2 045	2 192
31	112.4		121.4	603	753	904	1 055	1 205	1 356	1 507	1 657	1 808	1 959	2 109	2 260
32	116.0		125.0	621	776	932	1 087	1 242	1 397	1 553	1 708	1 863	2 018	2 174	2 329
33	119.6		128.6	639	799	959	1 119	1 279	1 438	1 598	1 758	1 918	2 078	2 238	2 397
34	123.2		132.2	658	822	986	1 151	1 315	1 480	1 644	1 808	1 973	2 137	2 302	2 466
35	126.8		135.8	676	845	1 014	1 182	1 351	1 520	1 689	1 858	2 027	2 196	2 365	2 534
36	130.4		139.4	694	867	1 041	1 214	1 388	1 561	1 735	1 908	2 081	2 255	2 428	2 602
37	134.0		143.0	712	890	1 068	1 246	1 424	1 602	1 780	1 958	2 136	2 314	2 492	2 670
38	137.6		146.6	730	913	1 095	1 278	1 460	1 643	1 825	2 008	2 190	2 373	2 555	2 738
39	141.2		150.2	748	935	1 122	1 309	1 496	1 683	1 870	2 057	2 244	2 431	2 618	2 805
40	144.8		153.8	766	958	1 149	1 341	1 532	1 724	1 916	2 107	2 299	2 490	2 682	2 873
41	148.4		157.4	784	980	1 176	1 373	1 569	1 765	1 961	2 157	2 353	2 549	2 745	2 941
42	152.0		161.0	802	1 003	1 204	1 404	1 605	1 805	2 006	2 207	2 407	2 608	2 808	3 009
43	155.6		164.6	820	1 026	1 231	1 436	1 641	1 846	2 051	2 256	2 461	2 666	2 872	3 077
44	159.2		168.2	834	1 043	1 251	1 460	1 668	1 877	2 086	2 294	2 503	2 711	2 920	3 128
45	162.8		171.8	853	1 067	1 280	1 493	1 706	1 920	2 133	2 346	2 560	2 773	2 986	3 200
46	166.4		175.4	872	1 090	1 308	1 526	1 744	1 962	2 180	2 398	2 616	2 835	3 053	3 271
47	170.0		179.0	891	1 114	1 337	1 559	1 782	2 005	2 228	2 451	2 673	2 896	3 119	3 342
48	173.6		182.6	910	1 138	1 365	1 593	1 820	2 048	2 275	2 503	2 730	2 958	3 185	3 413
49	177.2		186.2	929	1 161	1 394	1 626	1 858	2 090	2 323	2 555	2 787	3 019	3 252	3 484
50	180.8		189.8	948	1 185	1 422	1 659	1 896	2 133	2 370	2 607	2 844	3 081	3 318	3 555

I*		36 cm	46 cm	56 cm	66 cm	76 cm	86 cm	96 cm	106 cm	116 cm	126 cm	136 cm	146 cm
----	-------------------------------------------------------------------------------------	-------	-------	-------	-------	-------	-------	-------	--------	--------	--------	--------	--------

A* = altezza / height / hauteur / Höhe / alto B* = larghezza / width / longueur / Breite / ancho
I* = interasse / pipe centres / distance entre depart et retour / Achsabstand / distancia entre las conexiones

AO25s

Watt Δt 50°

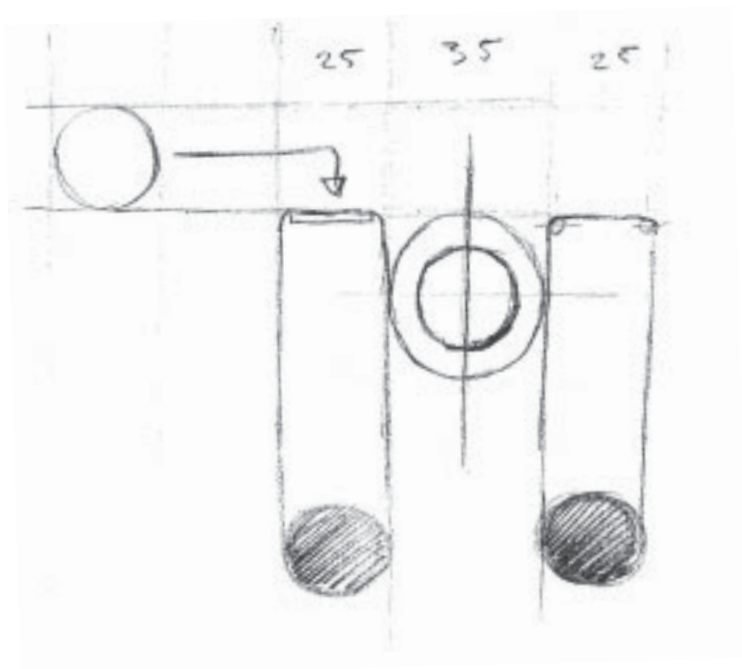
No. el.	B*		I*	40	50	60	70	80	90	100	110	120	130	140	150
	A*														
51	184.4		193.4	967	1 209	1 450	1 692	1 934	2 176	2 417	2 659	2 901	3 143	3 384	3 626
52	188.0		197.0	986	1 232	1 479	1 725	1 972	2 218	2 465	2 711	2 958	3 204	3 451	3 697
53	191.6		200.6	1 005	1 256	1 507	1 759	2 010	2 261	2 512	2 763	3 015	3 266	3 517	3 768
54	195.2		204.2	1 024	1 280	1 536	1 792	2 048	2 304	2 560	2 816	3 072	3 327	3 583	3 839
55	198.8		207.8	1 043	1 304	1 564	1 825	2 086	2 346	2 607	2 868	3 128	3 389	3 650	3 911
56	202.4		211.4	1 062	1 327	1 593	1 858	2 124	2 389	2 654	2 920	3 185	3 451	3 716	3 982

I*		36 cm	46 cm	56 cm	66 cm	76 cm	86 cm	96 cm	106 cm	116 cm	126 cm	136 cm	146 cm

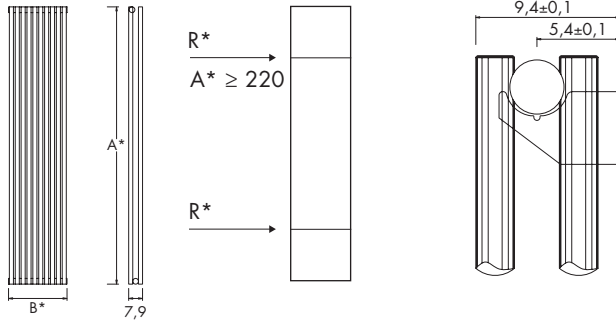
No. el.	B*		I*	160	170	180	190	200	210	220	230	240	250	260	280
	A*														
6	22.4		31.4	479	509	539	569	599	629	659	689	719	749	778	838
7	26.0		35.0	559	594	629	664	699	734	768	803	838	873	908	978
8	29.6		38.6	639	679	719	758	798	838	878	918	958	998	1 038	1 118
9	33.2		42.2	719	763	808	853	898	943	988	1 033	1 078	1 123	1 168	1 257
10	36.8		45.8	798	848	898	948	998	1 048	1 098	1 148	1 198	1 248	1 297	1 397
11	40.4		49.4	878	933	988	1 043	1 098	1 153	1 208	1 262	1 317	1 372	1 427	1 537
12	44.0		53.0	958	1 018	1 078	1 138	1 198	1 257	1 317	1 377	1 437	1 497	1 557	1 677
13	47.6		56.6	1 038	1 103	1 168	1 233	1 297	1 362	1 427	1 492	1 557	1 622	1 687	1 816
14	51.2		60.2	1 118	1 188	1 257	1 327	1 397	1 467	1 537	1 607	1 677	1 747	1 816	1 956
15	54.8		63.8	1 198	1 272	1 347	1 422	1 497	1 572	1 647	1 722	1 796	1 871	1 946	2 096
16	58.4		67.4	1 277	1 357	1 437	1 517	1 597	1 677	1 756	1 836	1 916	1 996	2 076	2 236
17	62.0		71.0	1 357	1 442	1 527	1 612	1 697	1 781	1 866	1 951	2 036	2 121	2 206	2 375
18	65.6		74.6	1 437	1 527	1 616	1 706	1 796	1 886	1 976	2 065	2 155	2 245	2 335	2 514
19	69.2		78.2	1 513	1 607	1 702	1 796	1 891	1 986	2 080	2 175	2 269	2 364	2 458	2 647
20	72.8		81.8	1 589	1 688	1 787	1 887	1 986	2 085	2 185	2 284	2 383	2 483	2 582	2 780
21	76.4		85.4	1 665	1 769	1 873	1 977	2 081	2 185	2 289	2 393	2 497	2 601	2 705	2 913
22	80.0		89.0	1 741	1 850	1 958	2 067	2 176	2 285	2 394	2 502	2 611	2 720	2 829	3 046
23	83.6		92.6	1 817	1 930	2 044	2 157	2 271	2 385	2 498	2 612	2 725	2 839	2 952	3 179
24	87.2		96.2	1 893	2 011	2 129	2 248	2 366	2 484	2 603	2 721	2 839	2 958	3 076	3 312
25	90.8		99.8	1 969	2 092	2 215	2 338	2 461	2 584	2 707	2 830	2 953	3 076	3 199	3 445
26	94.4		103.4	2 045	2 173	2 300	2 428	2 556	2 684	2 812	2 939	3 067	3 195	3 323	3 578
27	98.0		107.0	2 118	2 250	2 383	2 515	2 648	2 780	2 912	3 045	3 177	3 309	3 442	3 707
28	101.6		110.6	2 191	2 328	2 465	2 602	2 739	2 876	3 013	3 150	3 287	3 424	3 561	3 835
29	105.2		114.2	2 264	2 406	2 547	2 689	2 831	2 972	3 114	3 255	3 397	3 538	3 680	3 963
30	108.8		117.8	2 338	2 484	2 630	2 776	2 922	3 068	3 214	3 360	3 506	3 653	3 799	4 091
31	112.4		121.4	2 411	2 561	2 712	2 863	3 014	3 164	3 315	3 466	3 616	3 767	3 918	4 219
32	116.0		125.0	2 484	2 639	2 795	2 950	3 105	3 260	3 416	3 571	3 726	3 881	4 037	4 347

I*		156 cm	166 cm	176 cm	186 cm	196 cm	206 cm	216 cm	226 cm	236 cm	246 cm	256 cm	276 cm

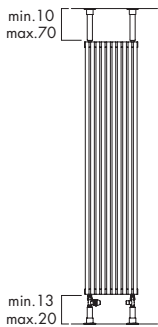
A* = altezza / height / hauteur / Höhe / alto B* = larghezza / width / longueur / Breite / ancho
 I* = interasse / pipe centres / distance entre depart et retour / Achsabstand / distancia entre las conexiones



AV25d

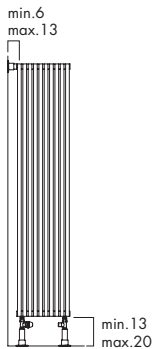


STBVS



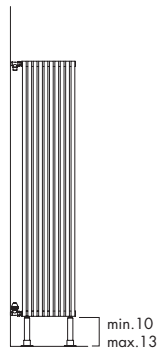
$A^* \geq 180$
 $B^* \leq 60$

STBVP



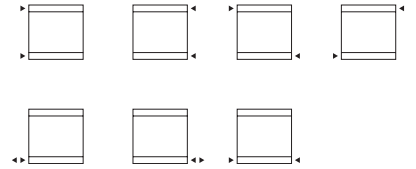
$A^* \geq 40$
 $B^* \leq 40$

STBVVP

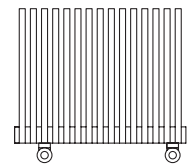


$A^* \geq 40$
 $B^* \leq 40$

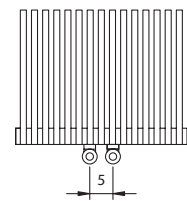
[X] attacco standard
standard connection
raccord standard
standard Anschluss
conexión estándar



[B] attacco speciale
special connection
raccord spéciale
speziell Anschluss
conexión especial



[B5] attacco interasse 5 cm
pipe centres 5 cm
raccords 5 cm
5 cm Achsabstand Anschluss
conexión entre ejes: 5 cm.



P* 296

A*	L*	min. el.	max. el.
40	0.376	6	66
50	0.455	6	66
60	0.535	6	66
70	0.614	6	66
80	0.694	6	66
90	0.773	6	66
100	0.853	6	66
110	0.932	6	44
120	1.012	6	44
130	1.091	6	44
140	1.171	6	44
150	1.250	6	44
160	1.330	6	27
170	1.409	6	27
180	1.489	6	27
190	1.568	6	27
200	1.648	6	27
210	1.727	6	27
220	1.806	6	27
230	1.886	6	27
240	1.965	6	27
250	2.045	6	27
260	2.124	6	27
280	2.283	6	27

A* = altezza / height / hauteur / Höhe / alto **B*** = larghezza / width / longueur / Breite / ancho **P*** = pagina / page / page / Seite / página
L* = contenuto acqua / content / volume / Inhalt / volumen **R*** = rinforzo / reinforcement / renforcement / Verstärkung / refuerzos

Kcal = Watt x 0,860
BTU = Watt x 3,413

Watt Δt 60° = Watt Δt 50° x 1,265
Watt Δt 40° = Watt Δt 50° x 0,750
Watt Δt 30° = Watt Δt 50° x 0,518
Watt Δt 20° = Watt Δt 50° x 0,307

p max = 10.0 bar

Colori/ colours / couleurs / Farbe / colores

[BIAN] B standard
T + 10%
S + 20%
[RAL] S + 20%
RAL non inclusi in tabella
special Ral colours
couleurs Ral spéciales
RAL Farbe nicht in der Tabelle inbegriffen
colores RAL especiales

Ulteriori dettagli
Further details
Ulérieures détails
Weitere Einzelheiten
Otros detalles



P* 294

AV25d

Watt Δt 50°

No. el.	A* / B*		I*	40	50	60	70	80	90	100	110	120	130	140	150
	A*	B*													
6	22,4	31,4		202	250	292	332	372	411	449	489	524	561	597	633
7	26,0	35,0		235	291	340	388	434	480	524	571	612	655	697	739
8	29,6	38,6		269	333	389	443	496	548	599	652	699	748	796	844
9	33,2	42,2		302	374	437	499	558	617	674	734	787	842	896	950
10	36,8	45,8		336	416	486	554	620	685	749	815	874	935	995	1.055
11	40,4	49,4		370	458	535	609	682	754	824	897	961	1.029	1.095	1.161
12	44,0	53,0		403	499	583	665	744	822	899	978	1.049	1.122	1.194	1.266
13	47,6	56,6		437	541	632	720	806	891	974	1.060	1.136	1.216	1.294	1.372
14	51,2	60,2		470	582	680	776	868	959	1.049	1.141	1.224	1.309	1.393	1.477
15	54,8	63,8		504	624	729	831	930	1.028	1.124	1.223	1.311	1.403	1.493	1.583
16	58,4	67,4		538	666	778	886	992	1.096	1.198	1.304	1.398	1.496	1.592	1.688
17	62,0	71,0		571	707	826	942	1.054	1.165	1.273	1.386	1.486	1.590	1.692	1.794
18	65,6	74,6		605	749	875	997	1.116	1.233	1.348	1.467	1.573	1.683	1.791	1.899
19	69,2	78,2		638	790	923	1.053	1.178	1.302	1.423	1.549	1.661	1.777	1.891	2.005
20	72,8	81,8		672	832	972	1.108	1.240	1.370	1.498	1.630	1.748	1.870	1.990	2.110
21	76,4	85,4		706	874	1.021	1.163	1.302	1.439	1.573	1.712	1.835	1.964	2.090	2.216
22	80,0	89,0		739	915	1.069	1.219	1.364	1.507	1.648	1.793	1.923	2.057	2.189	2.321
23	83,6	92,6		773	957	1.118	1.274	1.426	1.576	1.723	1.875	2.010	2.151	2.289	2.427
24	87,2	96,2		806	998	1.166	1.330	1.488	1.644	1.798	1.956	2.098	2.244	2.388	2.532
25	90,8	99,8		840	1.040	1.215	1.385	1.550	1.713	1.873	2.038	2.185	2.338	2.488	2.638
26	94,4	103,4		874	1.082	1.264	1.440	1.612	1.781	1.947	2.119	2.272	2.431	2.587	2.743
27	98,0	107,0		907	1.123	1.312	1.496	1.674	1.850	2.022	2.201	2.360	2.525	2.687	2.849
28	101,6	110,6		941	1.165	1.361	1.551	1.736	1.918	2.097	2.282	2.447	2.618	2.786	2.954
29	105,2	114,2		974	1.206	1.409	1.607	1.798	1.987	2.172	2.364	2.535	2.712	2.886	3.060
30	108,8	117,8		1.008	1.248	1.458	1.662	1.860	2.055	2.247	2.445	2.622	2.805	2.985	3.165
31	112,4	121,4		1.042	1.290	1.507	1.717	1.922	2.124	2.322	2.527	2.709	2.899	3.085	3.271
32	116,0	125,0		1.075	1.331	1.555	1.773	1.984	2.192	2.397	2.608	2.797	2.992	3.184	3.376
33	119,6	128,6		1.109	1.373	1.604	1.828	2.046	2.261	2.472	2.690	2.884	3.086	3.284	3.482
34	123,2	132,2		1.142	1.414	1.652	1.884	2.108	2.329	2.547	2.771	2.972	3.179	3.383	3.587
35	126,8	135,8		1.176	1.456	1.701	1.939	2.170	2.398	2.622	2.853	3.059	3.273	3.483	3.693
36	130,4	139,4		1.210	1.498	1.750	1.994	2.232	2.466	2.696	2.934	3.146	3.366	3.582	3.798
37	134,0	143,0		1.243	1.539	1.798	2.050	2.294	2.535	2.771	3.016	3.234	3.460	3.682	3.904
38	137,6	146,6		1.277	1.581	1.847	2.105	2.356	2.603	2.846	3.097	3.321	3.553	3.781	4.009
39	141,2	150,2		1.310	1.622	1.895	2.161	2.418	2.672	2.921	3.179	3.409	3.647	3.881	4.115
40	144,8	153,8		1.344	1.664	1.944	2.216	2.480	2.740	2.996	3.260	3.496	3.740	3.980	4.220
41	148,4	157,4		1.378	1.706	1.993	2.271	2.542	2.809	3.071	3.342	3.583	3.834	4.080	4.326
42	152,0	161,0		1.411	1.747	2.041	2.327	2.604	2.877	3.146	3.423	3.671	3.927	4.179	4.431
43	155,6	164,6		1.445	1.789	2.090	2.382	2.666	2.946	3.221	3.505	3.758	4.021	4.279	4.537
44	159,2	168,2		1.478	1.830	2.138	2.438	2.728	3.014	3.296	3.586	3.846	4.114	4.378	4.642
45	162,8	171,8		1.512	1.872	2.187	2.493	2.790	3.083	3.371					
46	166,4	175,4		1.546	1.914	2.236	2.548	2.852	3.151	3.445					
47	170,0	179,0		1.579	1.955	2.284	2.604	2.914	3.220	3.520					
48	173,6	182,6		1.613	1.997	2.333	2.659	2.976	3.288	3.595					
49	177,2	186,2		1.646	2.038	2.381	2.715	3.038	3.357	3.670					
50	180,8	189,8		1.680	2.080	2.430	2.770	3.100	3.425	3.745					

I*		36 cm	46 cm	56 cm	66 cm	76 cm	86 cm	96 cm	106 cm	116 cm	126 cm	136 cm	146 cm
----	--	-------	-------	-------	-------	-------	-------	-------	--------	--------	--------	--------	--------

A* = altezza / height / hauteur / Höhe / alto B* = larghezza / width / longueur / Breite / ancho
 I* = interasse / pipe centres / distance entre depart et retour / Achsabstand / distancia entre las conexiones

No. el.	A* / B*		I*	40	50	60	70	80	90	100
	A*	B*								
51	184,4	193,4	1.714	2.122	2.479	2.825	3.162	3.494	3.820	
52	188,0	197,0	1.747	2.163	2.527	2.881	3.224	3.562	3.895	
53	191,6	200,6	1.781	2.205	2.576	2.936	3.286	3.631	3.970	
54	195,2	204,2	1.814	2.246	2.624	2.992	3.348	3.699	4.045	
55	198,8	207,8	1.848	2.288	2.673	3.047	3.410	3.768	4.120	
56	202,4	211,4	1.882	2.330	2.722	3.102	3.472	3.836	4.194	
57	206,0	215,0	1.915	2.371	2.770	3.158	3.534	3.905	4.269	
58	209,6	218,6	1.949	2.413	2.819	3.213	3.596	3.973	4.344	
59	213,2	222,2	1.982	2.454	2.867	3.269	3.658	4.042	4.419	
60	216,8	225,8	2.016	2.496	2.916	3.324	3.720	4.110	4.494	
61	220,4	229,4	2.050	2.538	2.965	3.379	3.782	4.179	4.569	
62	224,0	233,0	2.083	2.579	3.013	3.435	3.844	4.247	4.644	
63	227,6	236,6	2.117	2.621	3.062	3.490	3.906	4.316	4.719	
64	231,2	240,2	2.150	2.662	3.110	3.546	3.968	4.384	4.794	
65	234,8	243,8	2.184	2.704	3.159	3.601	4.030	4.453	4.869	
66	238,4	247,4	2.218	2.746	3.208	3.656	4.092	4.521	4.943	

I*		36 cm	46 cm	56 cm	66 cm	76 cm	86 cm	96 cm
----	-----------------------------------------------------------------------------------	--------------	--------------	--------------	--------------	--------------	--------------	--------------

AV25d

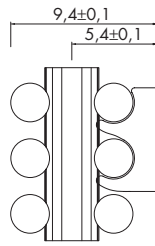
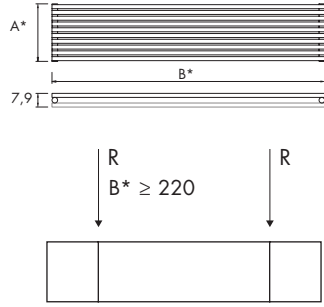
Watt Δt 50°

No. el.	A* B*	I*	160	170	180	190	200	210	220	230	240	250	260	280
6	22,4	31,4	668	703	755	772	806	839	872	905	938	970	1.007	1.071
7	26,0	35,0	779	820	881	900	940	979	1.018	1.056	1.095	1.131	1.175	1.250
8	29,6	38,6	890	938	1.006	1.029	1.074	1.119	1.163	1.207	1.251	1.293	1.342	1.428
9	33,2	42,2	1.002	1.055	1.132	1.157	1.209	1.259	1.309	1.358	1.408	1.454	1.510	1.607
10	36,8	45,8	1.113	1.172	1.258	1.286	1.343	1.399	1.454	1.509	1.564	1.616	1.678	1.785
11	40,4	49,4	1.224	1.289	1.384	1.415	1.477	1.539	1.599	1.660	1.720	1.778	1.846	1.964
12	44,0	53,0	1.336	1.406	1.510	1.543	1.612	1.679	1.745	1.811	1.877	1.939	2.014	2.142
13	47,6	56,6	1.447	1.524	1.635	1.672	1.746	1.819	1.890	1.962	2.033	2.101	2.181	2.321
14	51,2	60,2	1.558	1.641	1.761	1.800	1.880	1.959	2.036	2.113	2.190	2.262	2.349	2.499
15	54,8	63,8	1.670	1.758	1.887	1.929	2.015	2.099	2.181	2.264	2.346	2.424	2.517	2.678
16	58,4	67,4	1.781	1.875	2.013	2.058	2.149	2.238	2.326	2.414	2.502	2.586	2.685	2.856
17	62,0	71,0	1.892	1.992	2.139	2.186	2.283	2.378	2.472	2.565	2.659	2.747	2.853	3.035
18	65,6	74,6	2.003	2.110	2.264	2.315	2.417	2.518	2.617	2.716	2.815	2.909	3.020	3.213
19	69,2	78,2	2.115	2.227	2.390	2.443	2.552	2.658	2.763	2.867	2.972	3.070	3.188	3.392
20	72,8	81,8	2.226	2.344	2.516	2.572	2.686	2.798	2.908	3.018	3.128	3.232	3.356	3.570
21	76,4	85,4	2.337	2.461	2.642	2.701	2.820	2.938	3.053	3.169	3.284	3.394	3.524	3.749
22	80,0	89,0	2.449	2.578	2.768	2.829	2.955	3.078	3.199	3.320	3.441	3.555	3.692	3.927
23	83,6	92,6	2.560	2.696	2.893	2.958	3.089	3.218	3.344	3.471	3.597	3.717	3.859	4.106
24	87,2	96,2	2.671	2.813	3.019	3.086	3.223	3.358	3.490	3.622	3.754	3.878	4.027	4.284
25	90,8	99,8	2.783	2.930	3.145	3.215	3.358	3.498	3.635	3.773	3.910	4.040	4.195	4.463
26	94,4	103,4	2.894	3.047	3.271	3.344	3.492	3.637	3.780	3.923	4.066	4.202	4.363	4.641
27	98,0	107,0	3.005	3.164	3.397	3.472	3.626	3.777	3.926	4.074	4.223	4.363	4.531	4.820

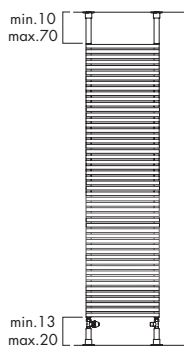
I*		156 cm	166 cm	176 cm	186 cm	196 cm	206 cm	216 cm	226 cm	236 cm	246 cm	256 cm	276 cm
----	--	--------	--------	--------	--------	--------	--------	--------	--------	--------	--------	--------	--------

A* = altezza / height / hauteur / Höhe / alto B* = larghezza / width / longueur / Breite / ancho
 I* = interasse / pipe centres / distance entre depart et retour / Achsabstand / distancia entre las conexiones

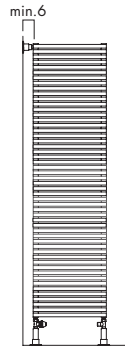
AO25d



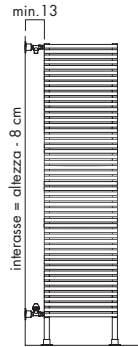
STBOS


 $A^* \leq 230$
 $B^* \leq 60$

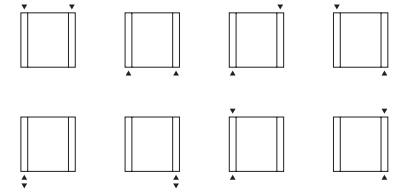
STBOP


 $A^* \leq 230$
 $B^* \leq 40$

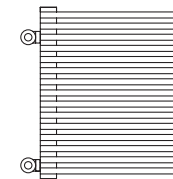
STBOPV


 $A^* \leq 230$
 $B^* \leq 40$

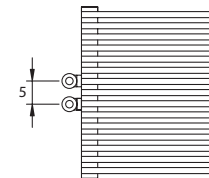
[X] attacco standard
 standard connection
 raccord standard
 standard Anschluss
 conexión estándar



[B] attacco speciale
 special connection
 raccord spéciale
 speziell Anschluss
 conexión especial



[B5] attacco interasse 5 cm
 pipe centres 5 cm
 raccords 5 cm
 5 cm Achsabstand Anschluss
 conexión entre ejes: 5 cm.



P* 296

A*	L*	min. el.	max. el.
40	0.376	6	56
50	0.455	6	56
60	0.535	6	56
70	0.614	6	56
80	0.694	6	56
90	0.773	6	56
100	0.853	6	56
110	0.932	6	44
120	1.012	6	44
130	1.091	6	44
140	1.171	6	44
150	1.250	6	44
160	1.330	6	27
170	1.409	6	27
180	1.489	6	27
190	1.568	6	27
200	1.648	6	27
210	1.727	6	27
220	1.806	6	27
230	1.886	6	27
240	1.965	6	27
250	2.045	6	27
260	2.124	6	27
280	2.283	6	27

A* = altezza / height / hauteur / Höhe / alto B* = larghezza / width / longueur / Breite / ancho P* = pagina / page / page / Seite / página
 L* = contenuto acqua / content / volume / Inhalt / volumen R* = rinforzo / reinforcement / renforcement / Verstärkung / refuerzos

Kcal = Watt x 0,860
 BTU = Watt x 3,413

Watt Δt 60° = Watt Δt 50° x 1,258
 Watt Δt 40° = Watt Δt 50° x 0,755
 Watt Δt 30° = Watt Δt 50° x 0,525
 Watt Δt 20° = Watt Δt 50° x 0,315

p max = 10.0 bar

Colori/ colours / couleurs / Farbe / colores

[BIAN]

B standard
 T + 10%
 S + 20%

[RAL]

RAL non inclusi in tabella
 special Ral colours
 couleurs Ral spéciales
 RAL Farbe nicht in der Tabelle inbegriffen
 colores RAL especiales


Ulteriori dettagli
 Further details
 Ulérieures détails
 Weitere Einzelheiten
 Otros detalles



P* 294

AO25d

Watt Δt 50°

No. el.	A* \ B*	I* 	40	50	60	70	80	90	100	110	120	130	140	150
6	22,4	31,4	207	259	310	362	414	465	517	569	621	672	724	776
7	26,0	35,0	235	294	352	411	470	529	587	646	705	763	822	881
8	29,6	38,6	264	330	396	462	527	593	659	725	791	857	923	989
9	33,2	42,2	293	366	439	512	585	658	731	804	878	951	1.024	1.097
10	36,8	45,8	321	401	481	562	642	722	802	883	963	1.043	1.123	1.204
11	40,4	49,4	349	437	524	611	699	786	874	961	1.048	1.136	1.223	1.310
12	44,0	53,0	378	473	567	662	756	851	946	1.040	1.135	1.229	1.324	1.418
13	47,6	56,6	406	507	609	710	812	913	1.015	1.116	1.218	1.319	1.421	1.522
14	51,2	60,2	434	543	652	760	869	977	1.086	1.194	1.303	1.412	1.520	1.629
15	54,8	63,8	464	580	696	812	929	1.045	1.161	1.277	1.393	1.509	1.625	1.741
16	58,4	67,4	495	618	742	865	989	1.113	1.236	1.360	1.484	1.607	1.731	1.855
17	62,0	71,0	524	655	786	917	1.048	1.179	1.310	1.441	1.572	1.703	1.834	1.965
18	65,6	74,6	553	692	830	968	1.107	1.245	1.383	1.522	1.660	1.798	1.937	2.075
19	69,2	78,2	582	728	873	1.019	1.164	1.310	1.455	1.601	1.746	1.892	2.037	2.183
20	72,8	81,8	611	764	917	1.070	1.223	1.375	1.528	1.681	1.834	1.987	2.139	2.292
21	76,4	85,4	639	799	959	1.119	1.279	1.439	1.598	1.758	1.918	2.078	2.238	2.398
22	80,0	89,0	668	835	1.002	1.169	1.336	1.503	1.670	1.837	2.004	2.172	2.339	2.506
23	83,6	92,6	696	870	1.044	1.218	1.392	1.567	1.741	1.915	2.089	2.263	2.437	2.611
24	87,2	96,2	724	905	1.086	1.267	1.448	1.629	1.810	1.991	2.172	2.353	2.534	2.715
25	90,8	99,8	752	940	1.128	1.316	1.504	1.692	1.880	2.068	2.256	2.444	2.632	2.820
26	94,4	103,4	779	974	1.168	1.363	1.558	1.753	1.947	2.142	2.337	2.532	2.726	2.921
27	98,0	107,0	806	1.008	1.209	1.411	1.613	1.814	2.016	2.217	2.419	2.620	2.822	3.024
28	101,6	110,6	833	1.042	1.250	1.458	1.667	1.875	2.083	2.291	2.500	2.708	2.916	3.125
29	105,2	114,2	860	1.075	1.290	1.505	1.720	1.935	2.150	2.365	2.580	2.795	3.010	3.224
30	108,8	117,8	886	1.108	1.330	1.551	1.773	1.995	2.216	2.438	2.659	2.881	3.103	3.324
31	112,4	121,4	913	1.141	1.370	1.598	1.826	2.054	2.283	2.511	2.739	2.967	3.196	3.424
32	116,0	125,0	939	1.174	1.409	1.644	1.879	2.113	2.348	2.583	2.818	3.053	3.287	3.522
33	119,6	128,6	965	1.206	1.447	1.688	1.930	2.171	2.412	2.653	2.894	3.135	3.377	3.618
34	123,2	132,2	991	1.239	1.486	1.734	1.982	2.230	2.477	2.725	2.973	3.221	3.468	3.716
35	126,8	135,8	1.016	1.270	1.524	1.778	2.031	2.285	2.539	2.793	3.047	3.301	3.555	3.809
36	130,4	139,4	1.041	1.301	1.561	1.821	2.082	2.342	2.602	2.862	3.123	3.383	3.643	3.903
37	134,0	143,0	1.066	1.332	1.598	1.865	2.131	2.398	2.664	2.930	3.197	3.463	3.730	3.996
38	137,6	146,6	1.091	1.363	1.636	1.909	2.181	2.454	2.727	2.999	3.272	3.545	3.817	4.090
39	141,2	150,2	1.115	1.393	1.672	1.951	2.229	2.508	2.787	3.065	3.344	3.623	3.902	4.180
40	144,8	153,8	1.139	1.423	1.708	1.993	2.277	2.562	2.847	3.131	3.416	3.701	3.986	4.270
41	148,4	157,4	1.162	1.453	1.744	2.034	2.325	2.615	2.906	3.197	3.487	3.778	4.068	4.359
42	152,0	161,0	1.186	1.483	1.779	2.076	2.372	2.669	2.965	3.262	3.558	3.855	4.151	4.448
43	155,6	164,6	1.209	1.511	1.813	2.116	2.418	2.720	3.022	3.324	3.627	3.929	4.231	4.533
44	159,2	168,2	1.232	1.540	1.848	2.156	2.464	2.772	3.080	3.388	3.697	4.005	4.313	4.621
45	162,8	171,8	1.255	1.568	1.882	2.196	2.509	2.823	3.137					
46	166,4	175,4	1.278	1.597	1.916	2.236	2.555	2.875	3.194					
47	170,0	179,0	1.299	1.624	1.949	2.274	2.599	2.924	3.248					
48	173,6	182,6	1.321	1.651	1.981	2.311	2.642	2.972	3.302					
49	177,2	186,2	1.342	1.678	2.013	2.349	2.684	3.020	3.356					
50	180,8	189,8	1.364	1.705	2.045	2.386	2.727	3.068	3.409					

I* 	36 cm	46 cm	56 cm	66 cm	76 cm	86 cm	96 cm	106 cm	116 cm	126 cm	136 cm	146 cm
----------------------------------------------------------------------------------------	-------	-------	-------	-------	-------	-------	-------	--------	--------	--------	--------	--------

A* = altezza / height / hauteur / Höhe / alto B* = larghezza / width / longueur / Breite / ancho
 I* = interasse / pipe centres / distance entre depart et retour / Achsabstand / distancia entre las conexiones

No. el.	A* \ B*	I*	40	50	60	70	80	90	100
51	184,4	193,4	1.384	1.730	2.076	2.422	2.768	3.114	3.460
52	188,0	197,0	1.405	1.756	2.107	2.458	2.809	3.160	3.512
53	191,6	200,6	1.424	1.780	2.136	2.492	2.848	3.205	3.561
54	195,2	204,2	1.444	1.805	2.166	2.527	2.888	3.249	3.610
55	198,8	207,8	1.461	1.826	2.192	2.557	2.922	3.288	3.653
56	202,4	211,4	1.479	1.849	2.218	2.588	2.958	3.328	3.697

I*	36 cm	46 cm	56 cm	66 cm	76 cm	86 cm	96 cm
----	-------	-------	-------	-------	-------	-------	-------

No. el.	A* \ B*	I*	160	170	180	190	200	210	220	230	240	250	260	280
6	22,4	31,4	827	879	931	982	1.034	1.086	1.138	1.189	1.241	1.293	1.344	1.448
7	26,0	35,0	940	998	1.057	1.116	1.175	1.233	1.292	1.351	1.409	1.468	1.527	1.644
8	29,6	38,6	1.055	1.121	1.187	1.253	1.319	1.385	1.450	1.516	1.582	1.648	1.714	1.846
9	33,2	42,2	1.170	1.243	1.316	1.390	1.463	1.536	1.609	1.682	1.755	1.828	1.901	2.048
10	36,8	45,8	1.284	1.364	1.444	1.525	1.605	1.685	1.765	1.846	1.926	2.006	2.086	2.247
11	40,4	49,4	1.398	1.485	1.572	1.660	1.747	1.834	1.922	2.009	2.096	2.184	2.271	2.446
12	44,0	53,0	1.513	1.607	1.702	1.797	1.891	1.986	2.080	2.175	2.269	2.364	2.458	2.648
13	47,6	56,6	1.624	1.725	1.827	1.928	2.030	2.131	2.233	2.334	2.436	2.537	2.638	2.841
14	51,2	60,2	1.737	1.846	1.955	2.063	2.172	2.280	2.389	2.498	2.606	2.715	2.823	3.041
15	54,8	63,8	1.857	1.973	2.089	2.205	2.321	2.437	2.554	2.670	2.786	2.902	3.018	3.250
16	58,4	67,4	1.978	2.102	2.226	2.349	2.473	2.596	2.720	2.844	2.967	3.091	3.215	3.462
17	62,0	71,0	2.096	2.227	2.359	2.490	2.621	2.752	2.883	3.014	3.145	3.276	3.407	3.669
18	65,6	74,6	2.213	2.352	2.490	2.628	2.766	2.905	3.043	3.181	3.320	3.458	3.596	3.873
19	69,2	78,2	2.328	2.474	2.619	2.765	2.911	3.056	3.202	3.347	3.493	3.638	3.784	4.075
20	72,8	81,8	2.445	2.598	2.751	2.904	3.056	3.209	3.362	3.515	3.668	3.821	3.973	4.279
21	76,4	85,4	2.557	2.717	2.877	3.037	3.197	3.357	3.516	3.676	3.836	3.996	4.156	4.475
22	80,0	89,0	2.673	2.840	3.007	3.174	3.341	3.508	3.675	3.842	4.009	4.176	4.343	4.677
23	83,6	92,6	2.785	2.959	3.133	3.307	3.481	3.655	3.829	4.003	4.177	4.351	4.526	4.874
24	87,2	96,2	2.896	3.077	3.258	3.439	3.620	3.801	3.982	4.163	4.344	4.525	4.706	5.068
25	90,8	99,8	3.008	3.196	3.384	3.572	3.760	3.948	4.136	4.324	4.512	4.700	4.888	5.264
26	94,4	103,4	3.116	3.311	3.505	3.700	3.895	4.090	4.284	4.479	4.674	4.869	5.063	5.453
27	98,0	107,0	3.225	3.427	3.628	3.830	4.032	4.233	4.435	4.636	4.838	5.039	5.241	5.644

I*	156 cm	166 cm	176 cm	186 cm	196 cm	206 cm	216 cm	226 cm	236 cm	246 cm	256 cm	276 cm
----	--------	--------	--------	--------	--------	--------	--------	--------	--------	--------	--------	--------

ANTRAX IT SRL
VIA BOSCALTO 40
31023 RESANA TV - ITALY
TEL. +39 0423 7174
FAX +39 0423 717474
WWW.ANTRAX.IT
ANTRAX@ANTRAX.IT

